



Hurrells
Specialist Seeds

AMENITY GRASS SEED

WWW.HMSEEDS.CO.UK

01377 271400

INFO@HMSEEDS.COM



"WE HAVE BEEN USING HURRELLS SEEDS FOR THE LAST THREE SEASONS AND HAVE BEEN IMPRESSED WITH ITS TOLERANCE TO DISEASE AND ITS SWARD DENSITY ACHIEVED"

ALLASTER LEEDHAM
HEAD GROUNDSMAN
HULL CITY FOOTBALL CLUB

CONTENTS

HURRELLS FORMULA	4
MYCORRHIZAE	5
COLDSTART	6-7
FOOTBALL & RUGBY	8-11
LANDSCAPING	12-17
LAWNS	18-21
CRICKET	22-25
BOWLING	26-27
GOLF	28-33
POLO	34
RACECOURSE	35
TENNIS	36
WILDFLOWERS	37-47
FERTILISERS	48
SPREADERS	49
SOCIAL MEDIA	50
OUR DETAILS	51





MYCORRHIZAE

AVAILABLE AS A SEED DRESSING



WHAT IS MYCORRHIZAE

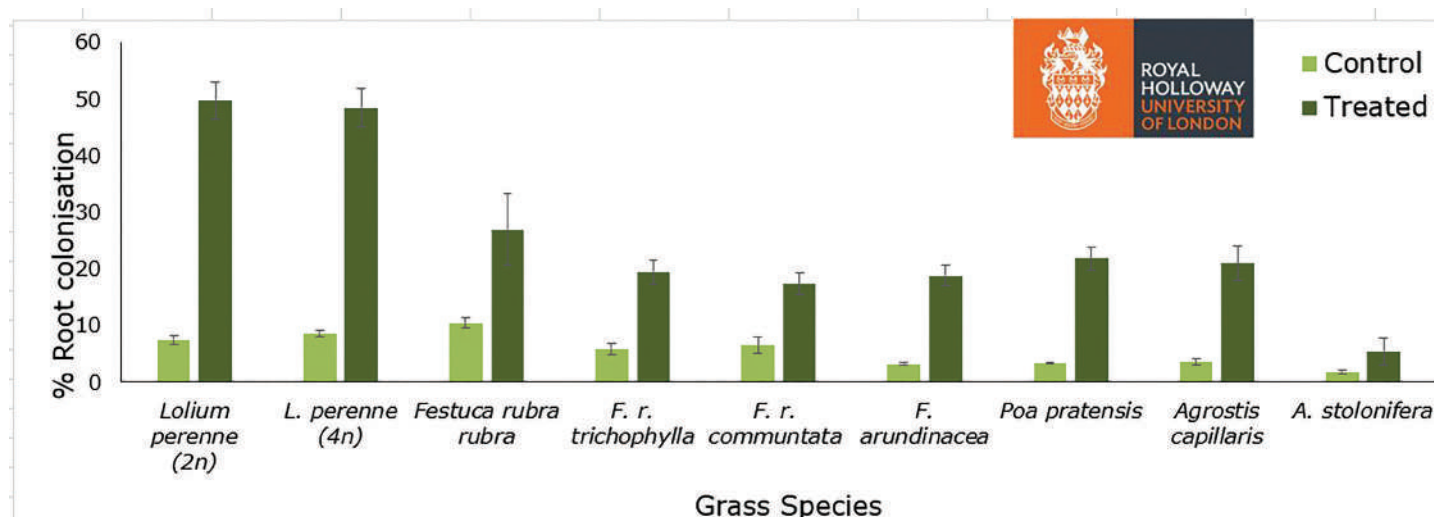
A naturally occurring beneficial fungi that forms a symbiotic relationship with the plants. It attaches to the roots and becomes an extension of the root system. This dramatically expands access to moisture and nutrients from the soil. In return, the host plant feeds the fungi with sugars and organic substances.

WHAT CAN MYCORRHIZAE DO FOR ME?

- Greatly improves root mass (up to 500x)
- Increases nutrient uptake
- Improves the health of plants and their roots
- Our trials showed faster establishment and better plant health

HOW CAN I UTILISE THE BENEFITS OF MYCORRHIZAE?

Hurrell's can apply Mycorrhizae seed dressing pre mixed with the seed, the best quality Mycorrhizae available will be used.



The mean percentage root colonisation of treated and non treated pots of a range of grass species.

We have also tested with -



COLDSTART 100

ULTIMATE WINTER ACTIVE MIX



- 100% Winter-active seed mix that grows in soil temperatures down to at least 5 degrees (other Turf Perennial Ryegrass requires 8-12C)
- Rapid to germinate (even in cold conditions), extremely fast growing, high wear tolerance, drought tolerant, great all year round colour and has a high resistance to disease.
- A perennial mix that will last forever unlike some competitors
- Fine leaved grasses unlike tetraploids and annual ryegrasses
- It is used in many NZ stadiums including Westpac Stadium
- Ceretec Centurion is the darker green sister variety of Colosseum

IN THE BAG - [#PURPLEBAG](#)

50% COLOSSEUM Winter Active Perennial Ryegrass

50% CERETEC CENTURION Winter Active Perennial Ryegrass

"WE HAVE BEEN USING HURRELLS SEEDS FOR THE LAST THREE SEASONS AND HAVE BEEN IMPRESSED WITH ITS TOLERANCE TO DISEASE AND ITS SWARD DENSITY ACHIEVED"

ALLASTER LEEDHAM
HEAD GROUNDSMAN
HULL CITY FOOTBALL CLUB

"I USED THE COLDSTART MIX AT A NEW TRAINING PITCH AT RUSHGREEN TRAINING GROUND IN A VERY WET YEAR AND I WAS VERY PLEASED AT THE VERY QUICK GROWTH AND DEVELOPMENT"

DOUGIE ROBERTSON
HEAD GROUNDSMAN
WEST HAM UNITED





FR.2

PREMIUM FOOTBALL & RUGBY

- Ultra hard wearing and dense grass for the perfect playing surface
- It can be used for new pitch construction or renovation for Football/Rugby Pitches or for other areas which receive wear
- Very fast recovery rate
- Great all year round colour
- This premium grass seed mixture has rapid germination & establishment
- The highest STRI rated grasses available

IN THE BAG - **#PURPLEBAG**

30% EUROSPORT Dwarf Perennial Ryegrass

30% MONROE Dwarf Perennial Ryegrass

20% EUROPITCH Dwarf Perennial Ryegrass

20% BERLIOZ 1 Dwarf Perennial Ryegrass

NEW SOWINGS 50-70G PER M2 | OVERSEEDING 25-50G PER M2 | PRODUCT CODE - 8022

FR CSI

PREMIUM FOOTBALL AND RUGBY
WITH ADVANCED CREEPING RYE



- Hardwearing and dense grass for the perfect playing surface
- Can be used for new pitch construction or renovation
- Very fast recovery rate
- Great all year round colour
- Rapid germination and establishment
- The highest STRI rated grasses available
- The CSI Corsica spreads with a creeping growth habit

IN THE BAG - **#PURPLEBAG**

20% CSI CORSICA Creeping Perennial Ryegrass

30% EUROPITCH Dwarf Perennial Ryegrass

30% EUROSPORT Dwarf Perennial Ryegrass

20% MONROE Dwarf Perennial Ryegrass

NEW SOWINGS 50-70G PER M2 | OVERSEEDING 35-50G PER M2 | PRODUCT CODE - 8021

FR.3

CONTRACTOR MIX



- Suitable for pitch renovations and new pitches
- Perfect for areas that receive high amounts of wear
- High shoot density & great ground cover
- Super quick recovery
- Good all year round colour
- Economical mixture
- Mid rated STRI grasses

IN THE BAG - **#PURPLEBAG**

35% BECKHAM Dwarf Perennial Ryegrass

35% JUBILEE Dwarf Perennial Ryegrass

30% VERTECH Dwarf Perennial Ryegrass

LIFESAVER

RAPID REPAIR



- Contains very fast growing grasses that will green up instantly
- Colosseum is a stadium quality perennial ryegrass that grows in soil temperatures down to at least 5 degrees
- Inclusion of the Double Tetraploid, that has extremely rapid germination
- It can be used for any area where fast growth is needed, including Sports pitches, Golf, Cricket, Racecourses etc

IN THE BAG - **#PURPLEBAG**

50% Annual Ryegrass Blend

25% DOUBLE Tetraploid Dwarf Perennial Ryegrass

25% COLOSSEUM Winter Active Dwarf Perennial Ryegrass

NEW SOWINGS 50-70G PER M2 | OVERSEEDING 35-50G PER M2 | PRODUCT CODE - 8103

HL.2

LOW MAINTENANCE



- Minimal maintenance and cutting
- Premium fine grasses
- Can be cut short or can be left longer
- Adaptable range of soil conditions
- Made for landscaping, but good enough quality to use as a lawn

IN THE BAG - **#PURPLEBAG**

30% Strong Creeping Red Fescue

25% Slender Creeping Red Fescue

25% Chewings Fescue

15% Smooth Stalked Meadow Grass

5% Highland Browntop Bent

HL.3

GENERAL LANDSCAPING



- Great all round mix that can be used in the majority of situations
- Hardwearing with rapid establishment
- Good all year round colour
- The varieties are slower to grow so require less cutting
- Can be cut short and striped to give the ultimate appearance

IN THE BAG - **#PURPLEBAG**

30% Dwarf Perennial Ryegrass

25% Strong Creeping Red Fescue

15% Slender Creeping Red Fescue

15% Chewings Fescue

10% Smooth Stalked Meadow Grass

5% Highland Browntop Bentgrass

NEW SOWINGS 50-70G PER M2 | OVERSEEDING 35-50G PER M2 | PRODUCT CODE - 8033

HL.8

SLOW GRO



- Utilises the benefits of CSI Corsica creeping perennial offering reduced clippings & minimal maintenance
- Technically advanced cultivars offering slow growth
- Adaptable to a wide range of soils
- Superior turf characteristics and density
- Dark green visual appearance
- High shoot density

IN THE BAG - **#PURPLEBAG**

20% Creeping Ryegrass

40% Dwarf Perennial Ryegrass

35% Slender Creeping Red Fescue

5% Browntop Bentgrass

NEW SOWINGS 50-70G PER M2 | OVERSEEDING 35-50G PER M2 | PRODUCT CODE - 8081



HL DOT

Department of Transport

25% Dwarf Perennial Ryegrass

20% Strong Creeping Red Fescue

30% Hard Fescue

10% Smooth Stalked Meadow Grass

10% Browntop Bent

5% Small Leaved White Clover

IN THE BAG [#PURPLEBAG](#)

Sowing Rate: 50-70g per m2 | Overseeding Rate: 35-50g per m2 | Product Code: 8031

- Complies with the Department of Transport standards (DOT) and specifications for verges
- Will suite most soil types including the poor soil types
- Tolerates the vehicle emissions/ spray from the road
- It has been designed for a very low maintenance
- Will only need cutting a couple of times per year
- The fescues will also knit together the soils on the banks
- When cut short it will look like a premium lawn or it can be left to look like more like a grass meadow



HL.5

Shade

20% Dwarf Perennial Ryegrass

28% Strong Creeping Red Fescue

20% Slender Creeping Red Fescue

2% Wood Meadow Grass

10% Smooth Stalked Meadow Grass

15% Hard Fescue

5% Browntop Bent

IN THE BAG [#PURPLEBAG](#)

Sowing Rate: 50-70g per m2 | Overseeding Rate: 35-50g per m2 | Product Code: 8035

- High-quality grass seed mix
- Suitable for areas which spend a large proportion of the time in shaded areas
- Formulated to be drought tolerant (most of the moisture in soils under shade can be taken from tree's)
- Fast to establish due to the perennial rye grass element
- Capable of growing in most soil types
- Can be cut low
- Very fine leafed
- Doesn't require much cutting (even less in shady areas)



HL.6

Birdstrike Airport

60% Tall Fescue

20% Cocksfoot

10% Timothy

10% Strong Creeping Red Fescue

IN THE BAG [#PURPLEBAG](#)

Sowing Rate: 50-70g per m2 | Overseeding Rate: 35-50g per m2 | Product Code: 8036

- The mixtures main purpose is to reduce the danger of birds striking the plane in flight in and around the airport
- The top of the grass plants in the mixture are spiked, which is why birds do not like nesting in the grass
- Suitable for the 'Long Grass Policy' & 'Long Grass management'
- Drought tolerant
- Resistant to frost
- Quick to establish
- Maintains a thick sward in all conditions
- As used at Doncaster airport and mentioned by BBC



HL.7

Coastal Grass Seed

20% Dwarf Perennial Ryegrass

25% Slender Creeping Red Fescue

20% Strong Creeping Red Fescue

25% Hard Fescue

5% Saltmarsh Grass

2.5% Creeping Bent

2.5% Browntop Bent

IN THE BAG **#PURPLEBAG**

Sowing Rate: 50-70g per m² | Overseeding Rate: 35-50g per m² | Product Code: 8080

- Tolerant of salt-laden winds and dry sandy conditions
- Helps soil stabilisation
- Reduce the risk of erosion
- Great for slopes and flat areas
- Fast to establish
- Great visual colour



HL.9

Hexipath/Griddings

15% Creeping Dwarf Ryegrass

20% Strong Creeping Red Fescue

20% Slender Creeping Red Fescue

30% Tall Fescue (Rhizomatous)

15% Chewings Fescue

IN THE BAG **#PURPLEBAG**

Sowing Rate: 50-70g per m² | Overseeding Rate: 35-50g per m² | Product Code: 8083

- Full of lateral creeping grasses, that matt together adding strength and durability. Ideal for gridding areas!
- Extremely wear tolerant to tolerate constant heavy traffic
- High drought, salt, shade and disease tolerance
- Includes side creeping Dwarf Perennial Ryegrass CSI CORSICA, giving superior density and making it very hardwearing. One seed can produce 10+ plants!
- Great colouration
- Adaptable to a wide range of soils



HL.10

Heathland, Acidic & Peat Soils

30% Hard Fescue

25% Hard Fescue

14% Sheeps Fescue

25% Chewings Fescue

0.5% Wavy Hairgrass

5.5% Browntop Bent

IN THE BAG **#PURPLEBAG**

Sowing Rate: 35-70g per m² | Overseeding Rate: 20-35g per m² | Product Code: 8084

- Heathland grass seed mixture that grows in acidic and peat soils
- All the grasses in this seed mixture will grow between a pH of 4.5-6 (the majority of ingredients will grown down to a pH of 4)
- Low nutrient requirement, which save on fertiliser costs or can be left in a natural environment
- Extremely fine leaved and high shoot density (can be cut short or left longer)
- High tolerance to drought, shade and salt too
- Low maintenance

HM.3

HARDWEARING WITH RYEGRASS



- Striking visual merit and appearance for a lush lawn
- Tolerates high levels of foot and pet wear
- Rapid germination & establishment
- Exceptional all year-round colour
- A premium, hard wearing lawn seed mixture
- Creeping grasses help strengthen the lawn

IN THE BAG - **#PURPLEBAG**

30% Dwarf Perennial Ryegrass

30% Strong Creeping Red Fescue

10% Slender Creeping Red Fescue

20% Chewings Fescue

5% Smooth Stalked Meadow Grass

5% Browntop Bent

BAG SIZES AVAILABLE:

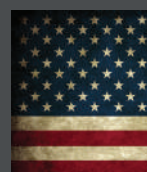
2KG | 5KG |

10KG | 20KG

NEW SOWINGS 50-70G PER M2 | OVERSEEDING 35-50G PER M2 | PRODUCT CODE - 8003

ALL AMERICAN

GET THE ULTIMATE DARK GREEN LAWN



- Newly developed mix for a dark green luxurious velvet finish
- Have you always wanted a dark green lawn that will make neighbours jealous? This mixture will certainly do that!
- Fast to establish and germinate
- New for the year, made from the best dark green cultivars
- Exceptional all year round colour

IN THE BAG - **#PURPLEBAG**

30% CSI CORSICA Creeping Ryegrass

20% SC1 Dwarf Tall Fescue

20% TOPGUN Dwarf Perennial Ryegrass

20% BROOKLAWN Smooth Stalked Meadow Grass

10% DUMAS Hard Fescue

NEW SOWINGS 50-70G PER M2 | OVERSEEDING 35-50G PER M2 | PRODUCT CODE - 8085

HM.5

SHADE TOLERANT LAWN



- Market leading, specially formulated for Shaded areas
- A very flexible mixture that can withstand wet and dry areas
- Suitable for a wide range of soils types
- Exceptionally high quality and fine leaved
- Can be used in shaded areas and full sunlight areas
- Will provide a lawn that will make your neighbours jealous!

IN THE BAG - **#PURPLEBAG**

20% Dwarf Perennial Ryegrass

28% Strong Creeping Red Fescue

20% Slender Creeping Red Fescue

2% Wood Meadow Grass

10% Smooth Stalked Meadow Grass

15% Hard Fescue

5% Browntop Bent

NEW SOWINGS 50-70G PER M2 | OVERSEEDING 35-50G PER M2 | PRODUCT CODE - 8005

"I AM A REGULAR USER OF HM.3 & HM.5 GRASS SEED. EXCELLENT PRODUCT AND VERY GOOD SERVICE"

EVERLUSH LAWN CARE

BAG SIZES AVAILABLE:

2KG | 5KG | 10KG | 20KG



HM.1

Fine/Bowling Lawns

40% Chewings Fescue

40% Slender Creeping Red Fescue

20% Browntop Bent

BAG SIZES AVAILABLE: 2KG | 5KG | 10KG | 20KG

IN THE BAG [#PURPLEBAG](#)

- Ultimate short, dense and fine turf grass seed mix
- Ideal for lawn enthusiasts, croquet lawns and bowling greens
- Uses the finest and most prestigious grass species
- Fantastic visual merit and appearance
- Can be cut very low (down to 3mm - requires regular cutting to tolerate this)
- Can be striped up and prepared to the highest standards
- Low maintenance
- Ideal for low amounts of traffic

Sowing Rate: 50-70g per m2 | Overseeding Rate: 35-50g per m2 | Product Code: 8001



HM.2

Premium, Ryegrass Free Lawn

45% Strong Creeping Red Fescue

15% Slender Creeping Red Fescue

30% Chewings Fescue

5% Smooth Stalked Meadow Grass

5% Browntop Bent

BAG SIZES AVAILABLE: 2KG | 5KG | 10KG | 20KG

IN THE BAG [#PURPLEBAG](#)

Sowing Rate: 50-70g per m2 | Overseeding Rate: 35-50g per m2 | Product Code: 8002

- Extremely high-quality, non-ryegrass lawn seed mixture
- Ideal for lawn enthusiasts, gardeners, landscapers and domestic users
- Will provide that lawn all your neighbours will be jealous of (can be striped up with lawnmower that has a roller attached)
- The grasses are very fine and leave a very fine finish after cutting
- Fantastic visual merit and appearance
- Low maintenance (slower growth and less cutting will be required as the sward does not include ryegrass)



HM.4

Public Open Spaces

50% Dwarf Perennial Ryegrass

50% Strong Creeping Red Fescue

BAG SIZES AVAILABLE: 2KG | 5KG | 10KG | 20KG

IN THE BAG [#PURPLEBAG](#)

- Easy to germinate, with rapid establishment and growth (fastest growing amenity mixture)
- Ideal for new areas, over seeding and patching worn out areas
- Great recovery after wear
- Very popular for landscapers, domestic lawns, utility companies, builders, caravan parks and local authorities for use in their public areas such as parks, lawns, verges, playing fields, event/ show grounds etc.
- It can also produce a good quality lawn, for an economical price

Sowing Rate: 50-70g per m2 | Overseeding Rate: 35-50g per m2 | Product Code: 8004



HM.FOURSEASON

Cold Growing Lawn Seed

30% Winter Active Dwarf Perennial

30% Strong Creeping Red Fescue

10% Slender Creeping Red Fescue

20% Chewings Fescue

5% Smooth Stalked Meadow Grass

5% Browntop Bent

IN THE BAG [#PURPLEBAG](#)

Sowing Rate: 50-70g per m2 | Overseeding Rate: 35-50g per m2 | Product Code: 8101

- Ideal lawn seed mixture for late autumn/winter/early spring lawn renovations
- Part of the mix grows down to soil temperatures of 5 degrees (normal lawn mixtures require 10 degrees)
- A premium, hardwearing fine leaved mixture (for an ultra-hardwearing 100% winter active mixture see Coldstart)
- Retains a premium look throughout the whole year (excellent all year-round colour)
- Striking visual merit and appearance for a lush front or back lawn

CR.1

PREMIUM CRICKET SQUARES



- Best selling Cricket Square grass seed mix!
- CR.1 originally born from our unique relationship with Scarborough Cricket Club (for 25+ years). Cultivars used and tested by John Dodds of Scarborough CC.
- Mixture selected from a combination of Hurrells onsite testing, John Dodds experience, David Hodgson seed trials and STRI testing (highly rated on the STRI list)
- Rapid establishment and strength from superior rooting cultivars
- Cultivars have been chosen to reduce crowning on the wicket

IN THE BAG - **#PURPLEBAG**

25% CHARDIN Dwarf Perennial Ryegrass

25% MONROE Dwarf Perennial Ryegrass

25% CLAUDINE Dwarf Perennial Ryegrass

25% RESISTUS Dwarf Perennial Ryegrass

NEW SOWINGS 50-70G PER M2 | OVERSEEDING 25-50G PER M2 | PRODUCT CODE - 8023

CR.3

Eco Cricket Squares

35% VERMILLION Dwarf Perennial Ryegrass

30% BELLEVUE Dwarf Perennial Ryegrass

35% TURFGOLD Dwarf Perennial Ryegrass

- Cricket Square mix blended in Yorkshire
- Rapid Establishment
- Cultivars chosen to reduce crowning on the wicket
- Good all year round colour
- Mixture produces a very fine leaf and good shoot density
- Will also tolerate a close cut
- Very fast and good root establishment
- Quick recovery after wear
- Very Competitive price
- Eco version of CR.1
- Mid STRI rated grasses

IN THE BAG [#PURPLEBAG](#)

Sowing Rate: 50-70g per m2 | Overseeding Rate: 35-50g per m2 | Product Code: 8030



CR.2

Cricket Outfields

30% VERMILLION Dwarf Perennial Ryegrass

25% MAXIMA Strong Creeping Red Fescue

25% EUROMARIC Slender Creeping Red Fescue

15% JOANNA Chewings Fescue

5% HIGHLAND Browntop Bent

- It has an inclusion of a fine leafed perennial ryegrass which adds a super fast establishment, good colour and an excellent wear tolerance
- Both Strong & Slender Creeping Red Fescue knit all the surface together for a dense even surface
- A Good all year round grass colour which also gives a clean cut when mown
- The mix includes fine leafed grasses which are also fairly low maintenance due to Fescues and Browntop Bent
- Can be used for over-sowing existing outfielders or on new outfielders
- This mixture has being used on 100's of Cricket Club in the UK

IN THE BAG [#PURPLEBAG](#)

Sowing Rate: 50-70g per m2 | Overseeding Rate: 35-50g per m2 | Product Code: 8024



"I have used Hurrells Grass Seeds throughout my career as a cricket groundsman and I have always been impressed with their quality standards and performance of their grass seeds, I have used them for many years at Scarborough Cricket Club now"

John Dodds, Award Winning, Head Groundsman, Scarborough CC

"I always get better results by using Hurrells Seeds"

Michael Botham
Bothams Prestige

PROUD GRASS SEED SUPPLIER TO: JOHN DODDS, AWARD WINNING, HEAD GROUNDSMAN, SCARBOROUGH CC

Hurrells have been very fortunate to have a long friendship with and supply to the award-winning groundsman John Dodds! John has been the Head Groundsman at Scarborough Cricket Club since 2010, and through his career he has won armfuls of awards, using Hurrells seed. John continues to show excellence in groundsmanship winning awards year in year out. Hurrells attempt to select cultivars especially for Cricket usage, using criteria that are not currently selected by independent seed cultivar testing stations. We are very interested in rooting depth, and rooting structure, as well as the speed of regrowth after wear and cosmetic qualities. We especially prefer to use cultivars that produce low crowns. Hurrells have Cricket trials grown in cricket loam to help identify outstanding cultivars that then can make it to our Premium CR1 mixture.

JOHN DODDS

"I have used Hurrells Grass Seeds throughout my career as a cricket groundsman and I have always been impressed with their quality standards and performance of their grass seeds, I have used them for many years at Scarborough Cricket Club now"



2020 CRICKET TRIALS

Come and join us at Dave Hodgson's Cricket Trials at Kirkstall Educational Cricket Club.

For more information please call the office on 01377 271400 or keep a lookout on social media for updates

- Take a guided tour around the cricket trials at Kirkstall Educational CC
- Unique opportunity to view the Cricket trials on cricket loam
- Held by the Head Groundsman Dave Hodgson (brand ambassador for Hurrells)
- Dave has been awarded lifetime membership of the Yorkshire Cricket Groundsman Association
- Complimentary refreshments

We look forward to seeing you.

BG.2

GREEN BAIZE



- Dwarf Perennial Ryegrass provides faster germination, better wear tolerance and high disease resistance
- Fescue content also produces a high quality turf surface
- Exceptional all year round colour
- Establishes quickly on a wide range of soils
- Dense sward with high shoot density
- Good drought tolerance

IN THE BAG - **#PURPLEBAG**

25% DICKENS Dwarf Perennial Ryegrass

25% VULCANUS Dwarf Perennial Ryegrass

20% BARPEARL Slender Creeping Red Fescue

25% ROSSIANTE Strong Creeping Red Fescue

5% HIGHLAND Browntop Bent

NEW SOWINGS 50-70G PER M2 | OVERSEEDING 20-35G PER M2 | PRODUCT CODE - 8047

BG.1

Premium Bowling Greens

45%	BODEGA	Chewings Fescue
45%	BARPEARL	Slender Creeping Red Fescue
10%	MANOR	Browntop Bent

- This mix will produce an excellent even playing surface
- It has an excellent visual merit
- Recovers well after wear
- It can be used for both over-seeding existing Bowling greens or establishing new ones
- Produces a fine leaved dense sward
- Drought tolerant
- Great disease tolerance
- Can be used from Spring to Autumn
- Overall will produce a superior playing surface
- Used on 100's of high-quality bowling clubs around the UK
- Highly rated STRI grasses

IN THE BAG **#PURPLEBAG**

Sowing Rate: 50-70g per m² | Overseeding Rate: 20-35g per m² | Product Code: 8026



BG.3

Premium Rye Greens

25%	DICKENS	Dwarf Perennial Ryegrass
25%	CHARDIN	Dwarf Perennial Ryegrass
20%	BARPEARL	Slender Creeping Red Fescue
20%	HUMBOLDT	Chewings Fescue
5%	JORVIK	Browntop Bent
5%	MANOR	Browntop Bent

- Premium version of BG.2 with higher rated cultivars & a premium bentgrass
- The Dwarf Perennial Ryegrass adds many benefits including a faster germination, faster growth, better wear tolerance and high disease resistance whilst being almost as fine as the rest of the grasses.
- Ryegrass cultivars have been chosen to reduce crowning on the playing surface
- It produces a very close knit grass sward which will withstand regular low mowing
- Easy to establish & harder wearing compared with a traditional Fescue Bent mix
- Good drought tolerance

IN THE BAG **#PURPLEBAG**

Sowing Rate: 50-70g per m² | Overseeding Rate: 20-35g per m² | Product Code: 8070



"I was very impressed at the way BG.2 Green Baize mixture quickly established itself under very difficult conditions. These new dwarf ryegrasses are quick to establish and seem to produce a dense sward with superb cover. I will definitely use it again for renovation work"

Peter Cotton
Turfgear, Cowling Green Specialists

HG.1A

PREMIUM ALL BENT



- Premium Bent Mixture - one of the best mixtures available on the market
- Very high shoot density
- Excellent disease resistance
- Great all year round colour
- Tolerates low cutting regimes for fast, even and superior greens
- Premium cultivars that are high in the STRI booklet
- Excellent for over sowings throughout the year for renovation
- Can be used for new green constructions, however see HG.3 for an option with fescue

IN THE BAG - **#PURPLEBAG**

50% MANOR Browntop Bent

50% JORVIK Browntop Bent

NEW SOWINGS 8G PER M2 | OVERSEEDING 5G PER M2 | PRODUCT CODE - 8011A

HG.2

CREEPING BENT

- Creeping bent has the highest shoot density and tillering capacity compared to all other bent grass types
- Includes two of the highest rated creeping bents on the current STRI turf grass list
- Great disease tolerance & excellent all year round colour
- Recommend low nitrogen applications to prevent thatch previously associated with older creeping bent cultivars
- Exceptionally tolerant to very low cutting heights
- Highly tolerant of temperature extremes

IN THE BAG - **#PURPLEBAG**

50% 007 Creeping Bent

50% COBRA NOVA Creeping Bent

NEW SOWINGS 8G PER M2 | OVERSEEDING 5G PER M2 | PRODUCT CODE - 8012



HG.3

Fescue/Bent

45%	BODEGA	Chewings Fescue
45%	BARPEARL	Slender Creeping Red Fescue
10%	MANOR	Browntop Bent

- A very popular ultra-fine Fescue / Bent Grass Seed Mixture
- It will tolerate very low cutting regimes for fast, even and superior greens
- Produces excellent all year round greens
- Cultivars used are very high quality
- Can be used for new green constructions
- Can be used to over sow greens for renovation work
- Highly rated STRI grasses

IN THE BAG **#PURPLEBAG**

Sowing Rate: 35-70g per m2 | Overseeding Rate: 35-50g per m2 | Product Code: 8013



HMG

Chewings/Bent

90%	BODEGA	Browntop Bent
10%	JORVIK	Browntop Bent

- Traditional Chewings / Bent Grass Seed mixture
- Extremely fine and dense sward
- Can be cut low
- Very popular for new green sowings
- Great for over-sowing
- Great quality
- See HG.3 for a similar mix with a premium Bentgrass
- Competitive price
- Can also be used on Bowling Greens and other fine areas
- Highly rated STRI Grasses

IN THE BAG **#PURPLEBAG**

Sowing Rate: 35-70g per m2 | Overseeding Rate: 35-50g per m2 | Product Code: 8019



HPG

Turf Perennial Greens

40%	TOPGUN	Dwarf Perennial Ryegrass
40%	DICKENS	Dwarf Perennial Ryegrass
20%	CHARDIN	Dwarf Perennial Ryegrass

- A new mixture of a Dwarf Perennial Ryegrass's for Golf Greens
- "Sowing to mowing" in bare areas in 9 days (in ideal conditions)
- Low mowing height - as low as 4mm
- Performance tested to improve greens that struggle using traditional Fescue & Bent Grass
- Easy and fast to establish (most soils)
- Through testing preferred cultivars very fine leaf turf type perennials
- Excellent healthy dark green colour
- High shoot density
- Non-crowning varieties for a smooth roll
- Excellent wear tolerance and highly competitive nature
- Cheaper alternative to Bent & Fescue

A CREEPING CSI VERSION AVAILABLE

IN THE BAG **#PURPLEBAG**

Sowing Rate: 50-70g per m2 | Overseeding Rate: 35-50g per m2 | Product Code: 8064



ULTIMATE MIX

CREEPING, WINTER ACTIVE, DARK GREEN VISUAL MERIT

- Includes advanced CSI Corsica Creeping Ryegrass, that regenerates itself after damage with reproductive tillers
- Includes Colosseum a winter active Perennial Ryegrass that grows down to soil temperatures of 5 degrees
- Impressive rapid establishment and recovery after damage
- Exceptional all year round colour
- Suitable for tees, fairways, hardwearing areas and even greens

IN THE BAG - [#PURPLEBAG](#)

40% CSI CORSICA Creeping Perennial Ryegrass

30% COLOSSEUM Winter Active Dwarf Perennial Ryegrass

30% TOPGUN Dwarf Perennial Ryegrass

NEW SOWINGS 50-70G PER M2 | OVERSEEDING 35-50G PER M2

HT.3

PREMIER TEES



- Four high quality turf perennials offering impressive turf density
- CSI Corsica Creeping Ryegrass, that regenerates itself after damage with reproductive tillers
- Rapid establishment
- Excellent wear tolerance
- Very good shoot recovery
- Excellent disease resistance
- Good all year round colour

IN THE BAG - **#PURPLEBAG**

20% CSI CORSICA Creeping Ryegrass

20% CHARDIN Perennial Ryegrass

30% GLADYS Perennial Ryegrass

30% BECKHAM Perennial Ryegrass

NEW SOWINGS 35-70G PER M2 | OVERSEEDING 20-35G PER M2 | PRODUCT CODE - 8010



PTR

Tall Fescue

35% GREYSTONE Tall Fescue

35% BEAGLE Tall Fescue

30% BROCKTON Tall Fescue

IN THE BAG [#PURPLEBAG](#)

Sowing Rate: 35-70g per m² | Overseeding Rate: 20-35g per m² | Product Code: 8740

- Drought tolerant amenity grass seed mix
- Ideal for drought prone soils that are free draining
- Perfect for lawns, warm/summer sports usage and challenging high wear areas
- Excellent in sandy soils, for example any area that may have bunker splash (high performance in such areas, whilst other grasses struggle to survive)
- Very competent, deep rooting system that develops quickly allowing plant survival even in very dry conditions



HT.2

Non Ryegrass Tees

40% CALLIOPE Chewings Fescue

20% WAGNER Chewings Fescue

20% BARPEARL Slender Creeping Red Fescue

10% MIRACLE Smooth Stalked Meadow Grass

10% HIGHLAND Browntop Bent

IN THE BAG [#PURPLEBAG](#)

Sowing Rate: 35-70g per m² | Overseeding Rate: 20-35g per m² | Product Code: 8017

- Grass seed mix for Golf Tees with no Rye
- Fine leafed that will give a very attractive looking Golf Tee
- Can be cut low
- Excellent disease resistance
- Can be used for new Golf tee's, over sowings and patching up divots
- Good all year round colour
- High rated cultivars



HF.1

Non Ryegrass Fairways

30% DUMAS Hard Fescue

25% BARPEARL Slender Creeping Red Fescue

25% SERGEI Strong Creeping Red Fescue

20% BODEGA Chewings Fescue

IN THE BAG [#PURPLEBAG](#)

Sowing Rate: 35-70g per m² | Overseeding Rate: 20-35g per m² | Product Code: 8014

- A premium fairway grass seed mixture without rye
- Good visual merit due to fine leafed grass varieties
- It takes slightly longer to establish than the rye grass option but requires less cutting and gives a finer finish for a perfect playing surface
- Good all year round colour
- Can be used for new sowings or re-seeding renovations on the fairways
- Very good drought tolerance
- Great disease resistance



HF.2

Ryegrass Fairways

20% TOPGUN Dwarf Perennial Ryegrass

25% CSI CORSICA Creeping Ryegrass

20% EUROMARIC Slender Creeping Red Fescue

20% MAXIMA Strong Creeping Red Fescue

15% WAGNER Chewing Fescue

IN THE BAG [#PURPLEBAG](#)

Sowing Rate: 35-70g per m² | Overseeding Rate: 20-35g per m² | Product Code: 8015

- A Premium fairway grass seed mixture with Ryegrass (See HF.1 option without Rye)
- Ultra hard wearing
- Extremely quick to germinate
- Good visual merit due to fine leafed grass varieties
- The best mix for high traffic areas because of quick re-growth from wear and tear
- Very fast to establish for new sowings or renovations on the fairways and other areas including tees & semi-roughs



HP.1

New Polo

25%	GLADYS	Dwarf Perennial Ryegrass
25%	BECKHAM	Dwarf Perennial Ryegrass
25%	MIRACLE	Smooth Stalked Meadow Grass
15%	SERGEI	Strong Creeping Red Fescue
10%	BARPEARL	Slender Creeping Red Fescue

IN THE BAG [#PURPLEBAG](#)

Sowing Rate: 35-70g per m² | Overseeding Rate: 25-35g per m² | Product Code: 8044

- Produces a hard wearing, true playing surface
- Fast establishment
- Good ground cover
- Excellent recovery from wear
- Large inclusion of Smooth Stalked Meadow grass for strong root structure
- Strong and Slender Creeping Red Fescue also bind the playing surface together
- Fine leafed varieties
- High quality



HP.2

Polo Renovation 100%

35%	DICKENS	Dwarf Perennial Ryegrass
35%	GLADYS	Dwarf Perennial Ryegrass
30%	TURFGOLD	Dwarf Perennial Ryegrass

IN THE BAG [#PURPLEBAG](#)

Sowing Rate: 35-70g per m² | Overseeding Rate: 25-35g per m² | Product Code: 80480

- 100% Turf perennial mix with consistently well rated trusted cultivars
- Leading Polo renovation mixture used on many leading grounds
- HP2 promises faster renovation and consistent divot repair
- Establishes very quickly, with high wear tolerance
- Excellent summer colour & high resistance to turf diseases
- Quick establishment
- High wear tolerance



HP.3

Premium Polo Renovation

20%	CONNI	Dwarf Perennial Ryegrass
20%	MIRACLE	Dwarf Perennial Ryegrass
30%	DICKENS	Dwarf Perennial Ryegrass
30%	VULCANUS	Dwarf Perennial Ryegrass

IN THE BAG [#PURPLEBAG](#)

Sowing Rate: 35-70g per m² | Overseeding Rate: 25-35g per m² | Product Code: 8051

- Premium polo renovation grass seed mixture
- Creates a hardwearing playing surface with good live ground cover, enabling great recovery from wear
- Smooth stalked meadow grass will help the sward to produce a strong root structure
- Suited for summer and early autumn sowings, where higher soil temperatures are available to get maximum smooth stalked meadow grass establishment



HRC.1

Premium Racecourse 100%

30% VERMILLION Dwarf Perennial Ryegrass

30% CARNAC Dwarf Perennial Ryegrass

20% BECKHAM Dwarf Perennial Ryegrass

20% RESISTUS Dwarf Perennial Ryegrass

- Premium grass seed mix for a Racecourse with 100% Ryegrass
- Very quick establishment
- Withstands extremely hard wear
- Very quick recovery time
- Fine leafed Dwarf Perennial Ryegrass's
- Can be used for new sowing's or end of season renovation
- Highly rated premium cultivars

IN THE BAG **#PURPLEBAG**

Sowing Rate: 35-70g per m2 | Overseeding Rate: 25-35g per m2 | Product Code: 8043



HRC.2

Eco Racecourse

35% ESQUIRE Dwarf Perennial Ryegrass

35% VULCANUS Dwarf Perennial Ryegrass

30% VERTECH Dwarf Perennial Ryegrass

- Grass seed mix for a Racecourse with 100% Ryegrass
- Very quick establishment
- Withstands extremely hard wear
- Very quick recovery time
- Fine leafed Dwarf Perennial Ryegrass's
- Can be used for new sowing's or end of season renovation
- Economical price

IN THE BAG **#PURPLEBAG**

Sowing Rate: 35-70g per m2 | Overseeding Rate: 25-35g per m2 | Product Code:



HM.8

Equigraze

2.00kg KIMBER Dwarf Perennial Ryegrass

4.00kg BOYNE Dwarf Perennial Ryegrass

4.00kg FOXTROT Dwarf Perennial Ryegrass

1.50kg COMER Dwarf Perennial Ryegrass

0.50kg BROOKLAWN Dwarf Perennial Ryegrass

2.00kg MAXIMA Dwarf Perennial Ryegrass

- This grass seed mixture will provide excellent grazing for horses or ponies as its very palatable
- Will produce a dense sward and has the ability to repair itself
- Acknowledged as leading the field for equine usage
- Designed for horses, race horses and ponies
- Can be cut for hay
- Added Timothy increases grass palatability
- Strong creeping red fescue produces a strong, dense turf to increase sward resilience under hoof
- Prostrate growth habit that is easy to manage

IN THE BAG **#PURPLEBAG**

Sowing Rate: 14kg per acre | Product Code: 7008



TN.1

Tennis Courts

40% BELLVUE Dwarf Perennial Ryegrass

30% CALLIOPE Chewings Fescue

25% MAXIMA Strong Creeping Red Fescue

5% HIGHLAND Browntop Bent

- Successful grass seed mix for Tennis Courts
- Quick to establish
- Produces a dense hard wearing sward
- Fine leafed varieties
- Quick to recover
- Tolerant to close mowing
- Creates an even playing surface (varieties don't crown)

IN THE BAG [#PURPLEBAG](#)

Sowing Rate: 35-70g per m² | Overseeding Rate: 25-35g per m² | Product Code: 8025



TN.2

All Rye Tennis Courts

40% TOPGUN Chewings Fescue

40% DICKENS Dwarf Perennial Ryegrass

20% COLOSSEUM Winter Active Perennial Ryegrass

- Modern 100% Ryegrass seed mix for tennis courts
- Quicker to establish, harder wearing & quicker to recover over a Fescue / Rye Mix like TN.1
- Specially selected fine leafed, non-crowing varieties of Dwarf Ryegrass for a true even playing surface
- These varieties are even tolerant to close mowing for tennis

IN THE BAG [#PURPLEBAG](#)

Sowing Rate: 35-70g per m² | Overseeding Rate: 25-35g per m² | Product Code: 80251



GO.1

General Outfields

30% CLAUDINE Dwarf Perennial Ryegrass

30% MAXIMA Strong Creeping Red Fescue

10% EUROMARIE Slender Creeping Red Fescue

20% JOANNA Chewings Fescue

5% MIRACLE Smooth Stalked Meadow Grass

5% HIGHLAND Browntop Bent

- An excellent general purpose mixture
- Can be used for outfield areas / pitch's / parks / school fields etc
- It will establish in a wide range of soil types
- Includes Fescues and Bentgrass that are very fine leafed which gives it a good visual merit
- Requires less cutting than GO.2 General sports due to more fescues
- The Dwarf Ryegrass makes it hard wearing and quick to establish
- Creates a true playing surface

IN THE BAG [#PURPLEBAG](#)

Sowing Rate: 35-70g per m² | Overseeding Rate: 25-35g per m² | Product Code: 8028

Setting aside an area of your land for wildflower seed, can not only provide amazing colour, but it will greatly increase the number of species visiting. These meadows provide essential habitats, shelter and food for very important pollinators. This can include Bees, Butterflies, Moths, Spiders, Birds, Hedgehogs, Bats + many more species! All our mixtures include a large range of species from the RHS Plants For Pollinators lists. We have two different wildflower ranges; Urban High Colour and Minster Meadows! You can see the differences between the two ranges below, so then you can select which type of wildflower mixture you would like.



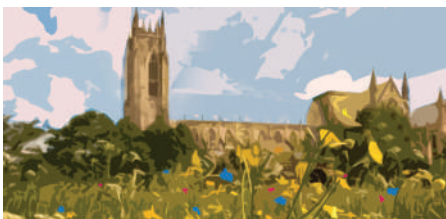
URBAN HIGH COLOUR

URBAN HIGH COLOUR

Bright, Colourful, Annual

- Multicoloured and will impress your neighbours
- Quick results
- Easier to establish than traditional Minster Meadows mixtures
- Low sowing rate
- Native wildflowers + horticultural flowers
- High inclusion of annuals

Please note just because its annual you can get more than one year out of the mixes! To do so after flowering annual plants seed and die off. They should be cut after seeding, this will allow the seeds to fall and reseed for the next year. Clippings should then be removed from the site



MINSTER MEADOWS

MINSTER MEADOWS

UK Native, Perennials and Annuals

- 100% UK native (grown in the UK)
- Made to replicate traditional English wildflower meadows with grasses and wildflowers
- Not as high colour as the Urban High Colour range
- Contains grasses
- Creates habitats
- Low seed rate
- Available 100% wildflowers (no grasses) or with grasses 80:20



HC1

ANNUAL ETNA



- UK native wildflowers + horticultural flowers
- Includes high colour, easy to grow annuals (providing flowers in one growing season)
- Colours include: reds, white, pink, purple, blue, yellow, orange
- High inclusion of different poppy species
- Environmentally friendly (provides habitats for Bees, Butterflies, other Insects and Birds)
- Sow in Spring or Autumn
- Our mixtures include a large amount of species from the RHS Plants For Pollinators wildflower seed list

IN THE MIX -

Black Eyed Susan, California Poppy, Candy Tuft, Cornflower, Fairy Toadflax, Field Poppy, Larkspur, Oriental Poppy, Red Flax, Shirley Singles Poppy & Sulphur Cosmos

HC10

THE BEES KNEES



- UK native wildflowers + horticultural flowers
- Includes high colour Annuals and Perennials which gives colour in the first year and beyond
- Colours include: pink, purple, blue, yellow, white red, orange
- High inclusion of Wildflowers designed with bees in mind
- Environmentally friendly (provides habitats for Bees, Butterflies, other Insects and Birds)
- Sow in Spring or Autumn
- Our mixtures include a large amount of species from the RHS Plants For Pollinators wildflower seed list

IN THE MIX -

Bishops Flower, Black Eyed Susan, California Poppy, Candytuft, Cornflower, Fairy Toadflax, Garden Cosmos, Love-In-A-Mist, Peredovic Sunflower, Phacelia, Sulphur Cosmos, Teasel, Foxglove, Vipers Bugloss, Carthusian Pink, Common Knapweed, Devils Bit Scabious, Field Scabious, Greater Knapweed, Jacobs Ladder, Michaelmas Daisy, Purple Coneflower, Red Campion, Sainfoin, Yarrow, Yarrow Cloth Of Gold & Yarrow Colorado Blend

SOW AT 2G PER M2 | PRODUCT CODE - 8987



HC2

Candy



African Daisy, Bishops Flower, California Poppy, Candy Tuft, Corn Poppy, Cornflower, Fairy Toadflax, Garden Cosmos, Larkspur, Love-In-A-Mist, Michaelmas Daisy, Shirley Singles Poppy & Zinnia Elegans (Mix)

IN THE BAG **#PURPLEBAG**

Sowing Rate: 2g per m2 | Product Code: 8978

- UK native wildflowers + horticultural flowers
- Includes high colour, easy to grow annuals (providing flowers in one growing season)
- Colours include: red, white, pink, purple, blue, yellow, orange
- Environmentally friendly (provides habitats for Bees, Butterflies, other Insects and Birds)
- Sow in Spring or Autumn
- Our mixtures include a large amount of species from the RHS Plants For Pollinators wildflower seed list



HC3

Sunkissed Meadow



Bishops Flower, Black Eyed Susan, California Poppy, Corn Marigold, Cosmidium Brunette, Dwarf Sunflower, Golden Tickseed, Sulphur Cosmos, Blanket Flower Arizona Sun, English Marigold, Oxeye Daisy, Yarrow Cloth Of Gold

IN THE BAG **#PURPLEBAG**

Sowing Rate: 2g per m2 | Product Code:: 8976

- UK native wildflowers + horticultural flowers
- Yellow based mixture for a sunkissed meadow
- Includes high colour, easy to grow annuals (providing flowers in one growing season)
- Colours include: yellows, orange, brown, red
- Environmentally friendly (provides habitats for Bees, Butterflies, other Insects and Birds)
- Sow in Spring or Autumn
- Our mixtures include a large amount of species from the RHS list



HC4

Dwarf Meadow



African Daisy, Blue Flax, California Poppy, Candy Tuft, Fairy Toadflax, Larkspur, Love-In-A-Mist, Red Flax, Shirley Singles Poppy, Blanket Flower, Carthusian Pink, English Marigold & Feathered Pink

IN THE BAG **#PURPLEBAG**

Sowing Rate: 2g per m2 | Product Code: 8981

- UK native wildflowers + horticultural flowers
- Includes high colour Annuals and Perennials which gives colour in the first year and beyond
- Lower growing Wildflowers that grow to around 40cm (in very fertile soils it's possible to grow higher and much lower in soils with a lower fertility)
- Colours include: yellow, pink, purple, red, blue
- Environmentally friendly (provides habitats for Bees, Butterflies, other Insects and Birds)



HC5

Kaleidoscope



Blue Flax, California Poppy, Corn Cockle, Corn Marigold, Corn Poppy, Cornflower, Golden Tickseed, Larkspur, Phacelia, Red Flax, Shirley Singles Poppy & Zinnia Elegans (Mix)

IN THE BAG **#PURPLEBAG**

Sowing Rate: 2g per m2 | Product Code: 8983

- UK native wildflowers + horticultural flowers
- Includes high colour, easy to grow annuals (providing flowers in one growing season)
- Kaleidoscope a burst of bright and vivid colours
- Colours include: blue, red, purple, yellow, pink, white
- Environmentally friendly (provides habitats for Bees, Butterflies, other Insects and Birds)
- Sow in Spring or Autumn
- Our mixtures include a large amount of species from the RHS

HC6

Sherbert Fizz

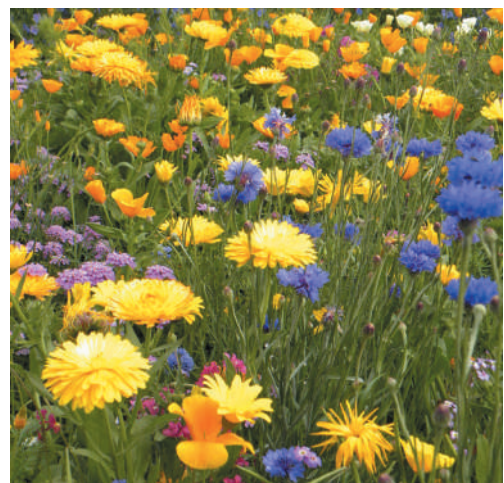


Black Eyed Susan, Blue Flax, California Poppy, Candy Tuft, Corn Marigold, Cornflower, Garden Cosmos, Love In A Mist, Phacelia & Sulphur Cosmos

IN THE BAG **#PURPLEBAG**

Sowing Rate: 2g per m2 | Product Code: 8984

- UK native wildflowers + horticultural flowers
- Includes high colour, easy to grow annuals (providing flowers in one growing season)
- A fizz of fast growing and great value wildflowers
- Colours include: yellow, orange, blue, white, pink, purple
- Environmentally friendly (provides habitats for Bees, Butterflies, other Insects and Birds)
- Sow in Spring or Autumn
- Our mixtures include a large amount of species from the RHS list



HC7

Butterfly Paradise



Candytuft, Cornflower, Cosmidium Brunette, Garden Cosmos, Golden Tickseed, Purple Loosestrife, Sulphur Cosmos, White Campion, Common Knapweed, Devils Bit Scabious, Field Scabious, Oriental Poppy, Purple Coneflower, Red Campion, Rose Campion, Wild Carrot, Yarrow, Yarrow Cloth Of Gold, Yarrow Colorado Blend

IN THE BAG **#PURPLEBAG**

Sowing Rate: 2g per m2 | Product Code: 8977

- UK native wildflowers + horticultural flowers
- Wildflowers specially selected to produce a magnet for butterflies!
- Includes high colour Annuals and Perennials which gives colour in the first year and beyond
- Colours include: pink, purple, blue, yellow, red, orange, brown, white
- Environmentally friendly (provides habitats for Bees, Butterflies, other Insects and Birds)
- Sow in Spring or Autumn
- Our mixtures include a large amount of species from the RHS list



HC8

Deep Purple



African Daisy, Blue Flax, Cornflower, Fairy Toadflax, Garden Cosmos, Larkspur, Love-In-A-Mist, Wild Carrot, Blue Eryngo, Carthusian Pink, Common Knapweed, Dames Rocket, Devils Bit Scabious, Feathered Pink, Field Scabious, Jacobs Ladder, Michaelmas Daisy, Oxeye Daisy, Purple Coneflower, Purple Loosestrife, Purpletop Vervain & Rose Campion

IN THE BAG **#PURPLEBAG**

Sowing Rate: 2g per m2 | Product Code: 8980

- UK native wildflowers + horticultural flowers
- A lasting mix of wildflowers giving a strong purple theme
- Includes high colour Annuals and Perennials which gives colour in the first year and beyond
- Colours include: purples, white, pink, blue, red
- Environmentally friendly (provides habitats for Bees, Butterflies, other Insects and Birds)
- Sow in Spring or Autumn
- Our mixtures include a large amount of species from the RHS list



HC9

Strawberries & Cream

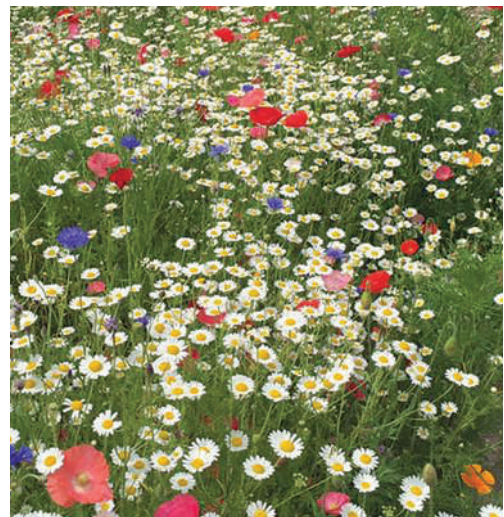


Babys Breath, Bishop's Flower, California Poppy, Candy Tuft, Corn Chamomile, Corn Poppy, Garden Cosmos, Shirley Singles, Poppy, Sulphur Cosmos, Feathered Pink, Maltese Cross, Oriental Poppy, Red Campion, Rose Campion, Sainfoin, Sweet William Catchfly, White Campion, Wild Carrot, Yarrow & Yarrow Colorado Blend

IN THE BAG **#PURPLEBAG**

Sowing Rate: 2g per m2 | Product Code: 8985

- UK native wildflowers + horticultural flowers
- A carpet of white with shades of pinks and reds
- Includes high colour Annuals and Perennials which gives colour in the first year and beyond
- Colours include: red, pink, orange, white
- Environmentally friendly (provides habitats for Bees, Butterflies, other Insects and Birds)
- Sow in Spring or Autumn
- Our mixtures include a large amount of species from the RHS Plants For Pollinators wildflower seed list



AC1

CORNFIELD ANNUALS



- UK native wildflower seed mix
- Annual cornfield mixture (providing flowers in one growing season)
- Ingredients are specially selected with the most popular cornfield flowers
- Great for quick and reliable high colour
- Can be used as a new meadow or added into existing perennial wildflowers
- Environmentally friendly
- Sow in Spring or in Autumn
- Grows well on most soil types
- After flowering annual plants flower, seed and die off. They should be cut after seeding, this will allow the seeds to fall and reseed for the next year. Clippings should then be removed from the site

IN THE MIX -

Corn Chamomile, Corn Cockle, Corn Marigold, Corn Poppy & Cornflower

AP1

PREMIUM



- UK native wildflower seed mix
- Ingredients are specially selected with a large range of premium wildflowers (grows on most soil types)
- Includes Annuals and Perennials which gives colour in the first year and beyond
- Diverse range of wildflowers with colour
- Environmentally friendly
- Sow in Spring or Autumn
- Our mixtures include a large amount of species from the RHS Plants For Pollinators wildflower seed list

IN THE MIX -

Corn Chamomile, Corn Cockle, Corn Marigold, Corn Poppy, Cornflower, Agrimony, Betony, Birdsfoot Trefoil, Bulbous Buttercup, Common Knapweed, Common Sainfoin, Field Scabious, Greater Knapweed, Ladys Bedstraw, Oxeye Daisy, Ragged Robin, Red Campion, Salad Burnet, Self Heal, Small Scabious, Vipers Bugloss, White Campion, Wild Carrot, Yarrow & Yellow Rattle

100% SOWING RATE - 2G PER M2 | 80:20 SOWING RATE - 4-5G PER M2 | PRODUCT CODE - 8953



AP2

Eco

Corn Chamomile, Corn Cockle, Corn Marigold, Corn Poppy, Cornflower, Common Vetch, Birdsfoot Trefoil, Bulbous Buttercup, Common Knapweed, Ladys Bedstraw, Lucerne, Oxeye Daisy, Phacelia, Red Campion, Sainfoin, Salad Burnet, Self Heal, White Campion, Wild Carrot, Yarrow & Yellow Rattle

IN THE BAG **#PURPLEBAG**

100% Sowing Rate: 2g per m2 | 80:20 Sowing Rate: 4-5g per m2 | Product Code: 8959



- UK native wildflower seed mix
- Ingredients are specially selected with a large range of wildflowers (grows on most soil types)
- Includes Annuals and Perennials which gives colour in the first year and beyond
- Diverse range of wildflowers with colour
- Environmentally friendly
- Sow in Spring or Autumn
- Our mixtures include a large amount of species from the RHS Plants For Pollinators wildflower seed list



AP3

Colour Bright

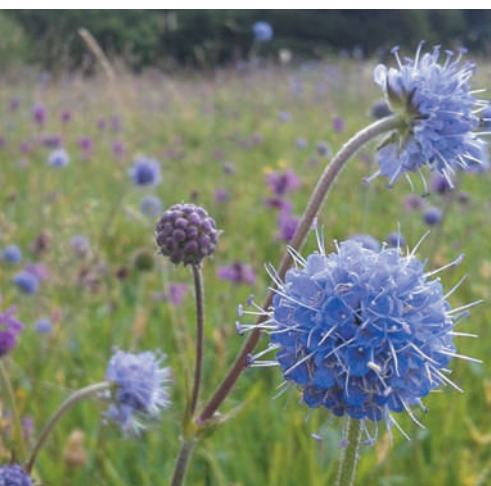
Birdsfoot Trefoil, Bladder Campion, Common Knapweed, Common Vetch, Corn Chamomile, Corn Marigold, Corn Poppy, Cornflower, Devils Bit Scabious, Dwarf Sunflower, Field Scabious, Native Red Clover, Oxeye Daisy, Phacelia, Ragged Robin, Red Campion, Scentless Mayweed, Selfheal, Vipers Bugloss, White Campion, Yarrow & Yellow Rattle

IN THE BAG **#PURPLEBAG**

100% Sowing Rate: 2g per m2 | 80:20 Sowing Rate: 4-5g per m2 | Product Code: 8988



- UK native wildflower seed mix
- Ingredients are specially selected with a large range of high colour wildflowers (grows on most soil types)
- Includes Annuals & Perennials for 1st year colour & beyond
- Diverse range of wildflowers with colour
- Environmentally friendly
- Sow in Spring or in Autumn
- Our mixtures include a large amount of species from the RHS Plants For Pollinators wildflower seed list



P1

Acid Soils

AC1 Cornfield Annual Mix, Autumn Hawkbit, Betony, Birdsfoot Trefoil, Bulbous Buttercup, Common Knapweed, Common Sorrel, Common Vetch, Devils Bit Scabious, Ladys Bedstraw, Meadow Buttercup, Oxeye Daisy, Ragged Robin, Ribwort Plantain, Selfheal, Sheeps Sorrel, Tufted Vetch, White Campion, Wild Foxglove, Wood Sage, Yarrow & Yellow Rattle

IN THE BAG **#PURPLEBAG**

100% Sowing Rate: 2g per m2 | 80:20 Sowing Rate: 4-5g per m2 | Product Code: 8963



- UK native wildflower seed mix
- Ingredients have been specially selected to grow on acidic soils. Ideal to grow on moorland, heathland, peat soils and other acidic areas.
- Includes Annuals and Perennials which gives colour in the first year and beyond
- Diverse range of acidic wildflowers that can survive down to a soil ph of 4.5
- Environmentally friendly
- Sow in Spring or Autumn
- Our mixtures include a large amount of species from the RHS Plants For Pollinators wildflower seed list



P2

Water Margins

AC1 Cornfield Annual Mix, Betony, Birdsfoot Trefoil, Common Meadow Rue, Devils Bit Scabious, Greater Birdsfoot Trefoil, Gypsywort, Hemp Agrimony, Ladys Bedstraw, Meadow Buttercup, Meadowsweet, Oxeye Daisy, Purple Loosestrife, Ragged Robin, Red Campion, Salad Burnet, Selfheal, Sneezewort, Square Stalked St Johns Wort, Tufted Vetch, Water Avens, Wild Angelica Yarrow, Yellow Flag Iris & Yellow Rattle

IN THE BAG **#PURPLEBAG**

100% Sowing Rate: 2g per m2 | 80:20 Sowing Rate: 4-5g per m2 | Product Code: 8965



- UK native wildflower seed mix
- Ingredients specially selected for water margins, pond edges and other wetland areas
- Includes Annuals and Perennials which gives colour in the first year and beyond
- Diverse range of wetland wildflowers
- Environmentally friendly (provides habitats for Bees, Butterflies, other Insects and Birds)
- Sow in Spring or Autumn
- Our mixtures include a large amount of species from the RHS Plants For Pollinators wildflower seed list

P3



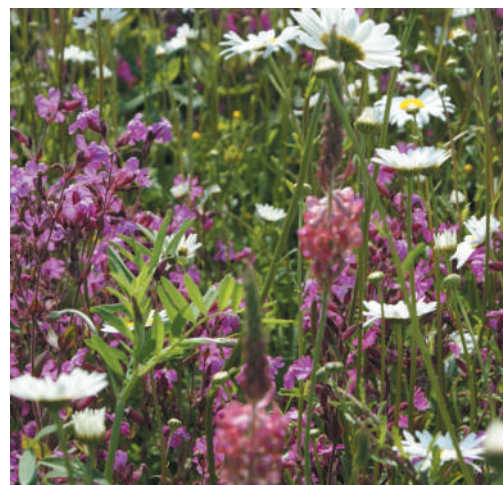
Calcareous Soils

AC1 Cornfield Annual Mix, Birdsfoot Trefoil, Bulbous Buttercup, Common Knapweed, Common Sainfoin, Devils Bit Scabious, Field Scabious, Greater Knapweed, Kidney Vetch, Lady's Bedstraw, Meadow Buttercup, Meadow Sweet, Oxeye Daisy, Red Campion, Salad Burnet, Self Heal, Small Scabious, Wild Carrot, Yarrow & Yellow Rattle

IN THE BAG **#PURPLEBAG**

100% Sowing Rate: 2g per m2 | 80:20 Sowing Rate: 4-5g per m2 | Product Code: 8955

- UK native wildflower seed mix
- Ingredients are specially selected to grow on calcareous, chalky and limestone soils
- Diverse range of calcareous wildflowers growing up to a pH of 8.5
- Includes Annuals and Perennials which gives colour in the first year and beyond
- Environmentally friendly
- Sow in Spring or Autumn
- Our mixtures include a large amount of species from the RHS Plants For Pollinators wildflower seed list



P4



Hedgerows

AC1 Cornfield Annual Mix, Agrimony, Bladder Campion, Common Knapweed, Common Vetch, Field Scabious, Foxglove, Garlic Mustard, Greater Knapweed, Hedge Bedstraw, Lady's Bedstraw, Meadow Buttercup, Oxeye Daisy, Red Campion, Ribwort Plantain, Selfheal, Tufted Vetch, Upright Hedge Parsley, White Campion, Wild Basil, Wood Avenas & Yarrow

IN THE BAG **#PURPLEBAG**

100% Sowing Rate: 2g per m2 | 80:20 Sowing Rate: 4-5g per m2 | Product Code: 8967

- UK native wildflower seed mix
- Ingredients are specially selected for hedgerows, woodland edges, light shade and roadsides
- Diverse range of wildflowers
- Includes Annuals and Perennials which gives colour in the first year and beyond
- Environmentally friendly
- Sow in Spring or Autumn
- Our mixtures include a large amount of species from the RHS Plants For Pollinators wildflower seed list



P5



Woodland & Heavy Shade

AC1 Cornfield Annual Mix, Agrimony, Betony, Bluebell, Columbine, Foxglove, Garlic Mustard, Hedge Bedstraw, Hedge Woundwort, Meadow Buttercup, Meadow Sweet, Ragged Robin, Ramsons, Red Campion, Selfheal, Tufted Vetch, White Campion, Wild Angelica, Wood Avenas, Wood Sage & Yarrow

IN THE BAG **#PURPLEBAG**

100% Sowing Rate: 2g per m2 | 80:20 Sowing Rate: 4-5g per m2 | Product Code: 8967

- UK native wildflower seed mix
- Ingredients are specially selected for Woodlands and partial-heavily shaded areas
- Diverse range of wildflowers
- Includes Annuals and Perennials which gives colour in the first year and beyond
- Environmentally friendly (provides habitats for Bees, Butterflies, other Insects and Birds)
- Sow in Spring or Autumn
- Our mixtures include a large amount of species from the RHS Plants For Pollinators wildflower seed list



P6



Damp Loam

AC1 Cornfield Annual Mix, Birdsfoot Trefoil, Bladder Campion, Common Knapweed, Common Sorrel, Field Scabious, Greater Knapweed, Lady's Bedstraw, Meadow Buttercup, Meadow Vetchling, Musk Mallow, Oxeye Daisy, Ragged Robin, Ribwort Plantain, Rough Hawkbit, Salad Burnet, Selfheal, Tufted Vetch, White Campion, Wild Carrot, Yarrow & Yellow Rattle

IN THE BAG **#PURPLEBAG**

100% Sowing Rate: 2g per m2 | 80:20 Sowing Rate: 4-5g per m2 | Product Code: 8971

- UK native wildflower seed mix
- Ingredients are specially selected for damp loam soils
- Diverse range of wildflowers
- Includes Annuals and Perennials which gives colour in the first year and beyond
- Environmentally friendly (provides habitats for Bees, Butterflies, other Insects and Birds)
- Sow in Spring or Autumn
- Our mixtures include a large amount of species from the RHS Plants For Pollinators wildflower seed list





P7

Dry Sandy Soils



AC1 Cornfield Annual Mix, Agrimony, Autumn Hawkbit, Birdsfoot Trefoil, Bladder Campion, Common Knapweed, Common Sainfoin, Common Sorrel, Field Scabious, Greater Knapweed, Lady's Bedstraw, Meadow Buttercup, Musk Mallow, Oxeye Daisy, Red Campion, Ribwort Plantain, Selfheal, Vipers Bugloss, White Campion, Wild Carrot, Yarrow & Yellow Rattle

IN THE BAG **#PURPLEBAG**

100% Sowing Rate: 2g per m2 | 80:20 Sowing Rate: 4-5g per m2 | Product Code: 8974

- UK native wildflower seed mix
- Ingredients specially selected for Dry and Sandy Soils
- Diverse range of deep rooting ingredients that will find moisture in well drained/drought areas
- Great for embankments and green roofs
- Includes Annuals and Perennials
- Environmentally friendly
- Sow in Spring or Autumn
- Our mixtures include a large amount of species from the RHS Plants For Pollinators wildflower seed list



P8

Flowering Lawn



Betony, Birdsfoot Trefoil, Catsear, Common Daisy, Common Sorrel, Common Trefoil, Ladys Bedstraw, Meadow Buttercup, Oxeye Daisy, Ribwort Plantain, Rough Hawkbit, Selfheal, Sheeps Sorrel, Toadflax, Wild Mignonette, Wild Red Clover & Yarrow

IN THE BAG **#PURPLEBAG**

100% Sowing Rate: 2g per m2 | 80:20 Sowing Rate: 4-5g per m2 | Product Code: 8991

- UK native wildflower seed mix
- Ingredients specially selected for low growing, species rich eco lawns
- Can adapt to regular mowing or leave longer cutting 1-2 times per year (leave to flower in Summer for best results)
- Can be added to slow growing grasses (without Ryegrass) or new areas
- Environmentally friendly (provides habitats for Bees, Butterflies, other Insects and Birds)
- Sow in Spring or Autumn



P9

Heavy Soils



AC1 Cornfield Annual Mix, Agrimony, Betony, Birdsfoot Trefoil, Common Cats Ear, Common Knapweed, Common Sorrel, Devils Bit Scabious, Field Scabious, Greater Knapweed, Ladys Bedstraw, Meadow Buttercup, Musk Mallow, Oxeye Daisy, Ragged Robin, Ribwort Plantain, Self Heal, Sheeps Sorrel, St Johns Wort, Tufted Vetch, Yarrow, Yellow Rattle, White Campion & Wild Carrot

IN THE BAG **#PURPLEBAG**

100% Sowing Rate: 2g per m2 | 80:20 Sowing Rate: 4-5g per m2 | Product Code: 8957

- UK native wildflower seed mix
- Ingredients specially selected for clay, heavy soils and moisture retentive soils
- Diverse range of Wildflower
- Environmentally friendly (provides habitats for Bees, Butterflies, other Insects and Birds)
- Includes Annuals and Perennials
- Sow in Spring or Autumn
- Our mixtures include a large amount of species from the RHS Plants For Pollinators wildflower seed list



G1

Companion Grass Mix

23% Crested Dogstail
29% Chewings Fescue
35% Slender Creeping Red Fescue
8% Browntop Bentgrass
2% Small Leaved Timothy
1% Yellow Oatgrass
1% Sweet Vernal Grass
1% Meadow Foxtail

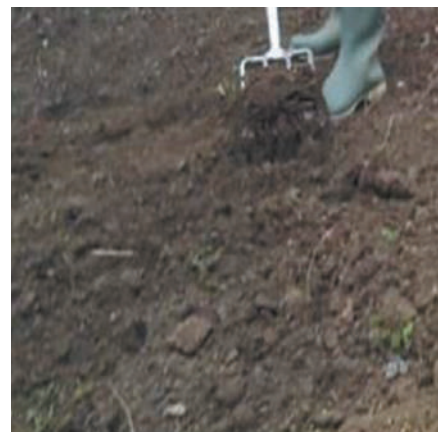
IN THE BAG **#PURPLEBAG**

Rate: 3-4g per m2 with Wildflowers | Rate: 35g per m2 (on own) | Product Code: 8990

- A fine leaved grass seed mixture ideal to sow with wildflowers
- These natural grasses are particularly low and slow growing
- Creates an open grass sward, to allow lesser competitive wildflowers to grow
- To further control these grasses, use Yellow Rattle wildflower seed to slow down grass growth
- Provides attractive seed heads when left long
- Sow at the same time or after planting wildflowers
- Can also be used without wildflowers

Step 1 - Site Preparation

Firstly, remove all weeds & plants such as Nettles, Thistles, Docks, Grass etc. This can be done by spraying the area with a Glyphosate weedkiller. For best results, you may have to spray the area more than once. The aim is to reduce a firm weed free tilth to promote healthy germination. The lower amount of nutrients, the better the results you will have. Try to achieve a moderate to low fertility within the top 15cm of the soil. Weeds and grasses grow faster than Wild Flowers and will therefore compete and eventually take over the Wild Flowers. (If the top soil is extremely fertile, remove the top soil to subsoil prior to sowing.) Cultivate the site to a depth of around 10cm (on badly drained or compacted soils -25cm). This can be done with a fork, petrol tiller or on large areas a plough. The site should be cultivated as early as possible. Measure the area, so you can work out how much seed is required in the next stage



Step 2 - Sowing

Sowing can take place throughout most of the year, providing a good tilth can be prepared. The months of March/April/August and September are generally most suited. There are some Wild Flowers that will only grow in certain soils, so make sure you choose the mix for your soils. We have mixtures for Standard, Calcareous, Acidic and Heavy soils. Ensure all the seed is mixed to ensure an evenly spread broadcast. Seed can be sown by hand for smaller areas, or with a spreader for larger areas. The seed can be mixed with sand to bulk it up and this helps to get an even spread.



The general sowing rates for Wild Flowers are;
 5g/m² - Mixtures containing Grass (80% Grass 20% Wild Flower)
 2g/m² - Pure 100% Wild Flower Mixtures

Once sown, rake or harrow the area to mix the seed in the soil approx 0.5cm depth afterwards, it's best to roll the area to compact the soil slightly. If a small area, it can be tread onto compact the soil.

Step 3 - Future Maintenance

In the first year after sowing, weed control is a priority. If weeds are present they can be controlled by mowing, pulling the weeds out by hand or spraying (however please be careful if spraying). You will only see the Annual Wild Flowers in the 1st year.

In the 2nd year after sowing, the Grass and Wild Flowers will be established and annual weeds will be out-competed, meaning less maintenance. Perennial & Biennial plants will be seen flowering in the second year. The Perennials will then flower every year after, and the Annual/Biennial plants will be seen if the seeds are distributed before removing the clippings.

Wild Flowers should be cut twice a year, once in the spring and once in late autumn after the plants produce seed. Cutting helps eliminate any weeds and tidies the area up. The late autumn cut will distribute seeds produced by the Wild Flowers. The clippings should then be removed from the site to reduce fertility.



Different Types of Wild Flowers

Annual- these perform their entire life cycle from seed to flower to seed within a single growing season (mainly Cornfield Wild Flowers are annual)

Perennial- they persist for many growing seasons but you will not see them flower in the first season (most Wild Flowers are Perennial)

Biennial- they require two years to complete their life cycle, they Flower in the second year only. For example Foxglove



THOMAS ELLIOT SKU: 9984 PRE-SEEDER 6-9-6

- High phosphate pre-seeding fertiliser
- 6+9+6 typical pre-seeding formula for all areas
- Promotes good root development on new and established turfs

- Releases nutrients over a 4-6 week period
- Dust free, uniform 2-4mm homogeneous mini granules
- Consistent and dependable performance
- Ideal for easy and accurate application
- Soluble nutrient sources produce quick green-up
- Spread up to 2 weeks before sowing the seed or spread at the same time

Apply at: 35-70g per m² (Covers 357-714m²)



THOMAS ELLIOT SKU: 9985 SPRING & SUMMER 10-4-4+3.5Fe

- Spring and summer fertiliser that will deliver good all-round performance (10-4-4+3.5Fe)
- Ideal balance of NPK to strengthen turf
- Encourages better root development and harder growth

- Also includes Iron that is a rapid green up, hardens turf against diseases and blackens moss
- Releases nutrients over a 4-6 week period
- High quality slow release mini-granular fertiliser
- Dust free, uniform 1.5-3mm homogeneous mini granules
- Consistent and dependable performance
- Ideal for easy and accurate application
- Soluble nutrient sources produce quick green-up

Apply at: 35g per m² (Covers 714m²)



THOMAS ELLIOT SKU: 9986 AUTUMN WINTER 5-5-10 + 2Fe

- Autumn and winter fertiliser that will help create a denser sward, increase tillering, increase root development, increase resistance to stress etc, encourages steady growth, improve root development etc.

- Also includes Iron that is a rapid green up, hardens turf against diseases and blackens moss
- Releases nutrients over a 4-6 week period
- High quality slow release mini-granular fertiliser
- Dust free, uniform 1.5-3mm homogeneous mini granules
- Consistent and dependable performance
- Ideal for easy and accurate application
- Soluble nutrient sources produce quick green-up

Apply at: 35g per m² (Covers 714m²)



THOMAS ELLIOT SKU: 9987 FEED&WEED MOSS KILL 10-2-1.7+8Fe

- Combined fertiliser, moss control and weedkiller
- 4 in 1 action formulation that makes grass greener, thicker, kills weeds and blackens/kills moss
- Includes herbicides to kill and control many broad leaved weeds

- Supplied in slow release, granular form to ensure long lasting action and effects
- Can be used throughout the growing season
- The best method of application is via a calibrated spreader
- Dead moss and other debris should be raked out 10 to 14 days after application
- Bare areas should be re-seeded after 28 days to prevent re-invasion weeds
- 2.86g/kg 2,4-D + 0.57g/kg dicamba + 217.3g/kg iron sulphate + 2.860 g / kg mecoprop-P

Apply at: 32g per m² (Covers 625m²)

MORE FERTILISERS AND LAWN SAND AVAILABLE PLEASE SEE OUR WEBSITE!

EARTHWAY 3400 SKU: 8104 HANDHELD SPREADER MEDIUM CAPACITY

- Heavy-duty handheld spreader
- Adjustable rate control
- Rustproof 1.8 lt capacity
- High-speed hand crank gearbox - screwed together to last a long time

- Ergonomic handle and scoop front design
- 5-Year Limited Warranty
- Use for applying; Lawn seed, Wildflower seed, fertiliser, ice melter and other lawn products over small areas
- Suitable for domestic and professional use

To Use: Hold spreader over pavement when filling. Sweep up any spilled product. Adjust spreader selector settings. Pull the trigger and turn crank clockwise while walking at normal speed across area to be covered with product.



EARTHWAY 2030 SKU: 9111 BROADCAST SPREADER (FULLY ASSEMBLED)

- The 2030 offers the homeowner a large capacity spreader with features found on professional models.
- 8"/20cm deep lug poly wheels that roll easily over rough surfaces.

- The rustproof poly hopper holds 30kg of material - Lawn seed, Wildflower seed, fertiliser, ice melter and other lawn products over medium-large lawns
- Exclusive EV-N-SPRED® 3-hole drop shut-off system ensures even distribution of all granular materials.
- Poxy powder coated chassis
- High-Speed gearbox
- 5-Year Limited Warranty



PG25 SKU: 9110 SEMI BROADCAST SPREADER

- Semi-pro model granule spreader
- 25 kg capacity
- Strong and reliable system of metal flow control
- Popular for Sports, Lawns & Landscaping

- The round hopper with plastic grid for an even spread
- Plastic weather cover to keep products dry
- Heavy duty frame
- Encased gearbox
- Tough, pneumatic tyres
- Weighs approx 10kg empty
- Round hopper with grid for easy flow
- Soft grip handle
- Self assemble



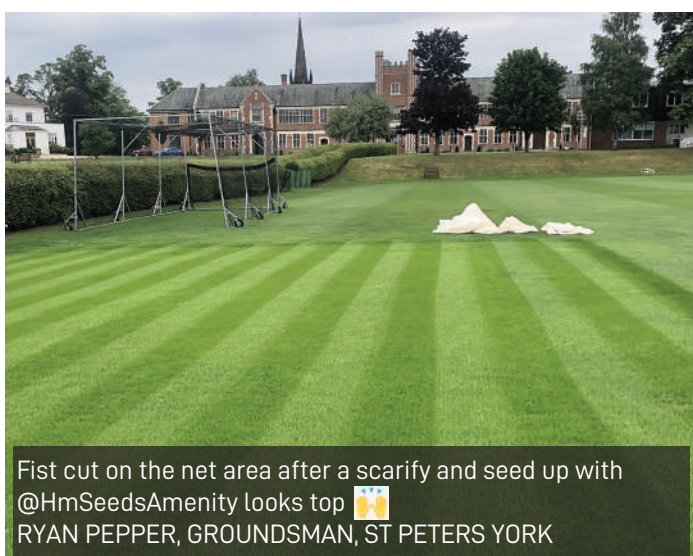
PG60 SKU: 9107 PROFESSIONAL BROADCAST SPREADER

- Very tough large professional granule spreader
- 50 kg + capacity
- For grass seed, fertiliser or even ice-melt products
- Very popular with professional users, sports clubs, landscapers & large gardens

- Large hopper with plastic grid, this reduces clumps
- Includes plastic weather cover
- Heavy duty frame
- Weighs approx 17 kg empty
- Sturdy hopper with grid
- Flow control with metal rods
- Large pneumatic tyres for all conditions
- Self assemble



MORE SPREADERS AVAILABLE PLEASE SEE OUR WEBSITE!



HURRELLS SEEDS WOULD LOVE TO SEE YOUR PHOTOS!

Please post them on social media and tag Hurrells Seeds for freebies and the chance to win our best photo competition at the end of the year.

BANK DETAILS

HURRELL & MCLEAN SEEDS LTD

BARCLAYS BANK

ACCOUNT: 40142077

SORT CODE: 20-43-47

OTHER DETAILS

COMPANY REG NO: 03352454

VAT NO: 847272702

MERCHANT: 01062

REGULATED BY FERA (DEFRA)

EMAIL: INFO@HMSEEDS.COM

PHONE: 01377 271400

FAX: 01377 271500

WEB: WWW.HMSEEDS.COM

ADDRESS

HURRELL & MCLEAN SEEDS LTD

BEVERLEY ROAD

CRANSWICK, DRIFFIELD,

EAST YORKSHIRE

YO25 9PF





HURRELLS SEEDS,
BEVERLEY ROAD, CRANSWICK,
EAST YORKSHIRE, YO25 9PF

01377 271400
INFO@HMSEEDS.COM
WWW.HMSEEDS.COM

£5.99