



# Hurrells

Specialist Seeds

AGRICULTURAL  
& SFI

[WWW.HMSEEDS.COM](http://WWW.HMSEEDS.COM)

01377 271400

[INFO@HMSEEDS.COM](mailto:INFO@HMSEEDS.COM)

SFI MIXTURES  
PAGE 4-14

ORGANIC  
PAGE 15

SHORT TERM GRASS MIXTURES  
PAGE 16-19

MEDIUM TERM GRASS MIXTURES  
PAGE 20

LONG TERM GRASS MIXTURES  
PAGE 21-27

GAMECOVER  
PAGE 28

WILDFLOWERS  
PAGE 29

ROOTS & OTHER  
PAGE 30-32

MYCORRHIZAE  
PAGE 33

TESTIMONIALS  
PAGE 34



FOR ORGANIC OPTIONS PLEASE  
CONTACT US!

**Hurrells**  
Specialist Seeds

SPECIALIST SEEDS

WWW.HMSEEDS.CO.UK

01377 271400

# WHY CHOOSE US?



- FAMILY RUN - established in 1946 with three generations involved within the business
- INDEPENDENT - we can pick the best varieties for optimal performance (from a huge range of plant breeders)
- OWN MIXING PLANT - on site mixing so we can produce tailored bespoke mixtures
- SUPERIOR RANGE - our mixtures are selected from Hurrells Seed trials, technical experience and feedback, Recommended Grass & Clover Lists For England & Wales, SRUC Recommended List of Grass and Clovers, Pasture Profit Index and breeders trials from across the world.
- Higher yields, high D value, high resistance to disease, high protein, high savings ££ and many more benefits!
- 4.7/5 rated on Google



VARIETIES FROM THE LATEST  
TOP BREEDING LINES



+5 OTHER LEADING  
BREEDING LINES



## SUSTAINABLE FARMING INCENTIVE (SFI)

### ACTIONS FOR SOILS

SAM2 - MULTI SPECIES WINTER COVER CROPS - PAYS £129 PER HA (YEARLY)

PAGE 5-7

SAM3 - HERBAL LEYS - PAYS £382 PER HA (YEARLY) PAGE 8-10

### IPM - INTEGRATED PEST MANAGEMENT

IMP2 - FLOWER RICH MARGINS - PAYS £673 PER HA (YEARLY) PAGE 11

IMP3 - COMPANION CROP - PAYS £55 PER HA (YEARLY) PAGE 11

### NUM - NUTRIENT MANAGEMENT

NUM2 - LEGUME OVERSEEDER - PAYS £102 PER HA (YEARLY) PAGE 12

NUM3 - LEGUME FALLOW - PAYS £593 PER HA (YEARLY) PAGE 12

### AHL - ACTIONS FOR FARMLAND WILDLIFE (ARABLE/HORT LAND)

AHL1 - POLLEN AND NECTAR - PAYS £614 PER HA (YEARLY) PAGE 13

AHL2 - WINTER BIRD FOOD - PAYS £732 PER HA (YEARLY) PAGE 13

AHL3 - GRASSYFIELD CORNERS - PAYS £590 PER HA (YEARLY) PAGE 14

AHL4 - BUFFER STRIP ON ARABLE - PAYS £451 PER HA (YEARLY) PAGE 14

IGL3 - BUFFER STRIP ON GRASSLAND - PAYS £235 PER HA (YEARLY) PAGE 14



## SAM 2 - GRAZABLE COVER CROP

- Rapid to establish and produces excellent quality forage
- Includes legumes to fix nitrogen and save on fertiliser costs
- Deep rooting species reduce compaction
- High in protein for stock weight gain
- Includes winter hardy brown mustard and winter vetch
- Contains annual species to last over winter and die after flowering
- Cost effective mixture

In the **#GREENBAG**

0.27 kg Alsike Clover

0.27 kg Crimson Clover

0.28 kg Balansa Clover

0.28 kg Berseem Clover

2.25 kg Common Vetch

1.50 kg Winter Vetch

0.30 kg Stubble Turnips

0.50 kg Forage Rape

0.70 kg Fodder Radish

0.35 kg Brown Mustard

0.30 kg Phacelia

7.00 kg per acre | SKU: 7926

## SAM2 - NITROGEN FIXER COVER CROP



40.0% Winter Forage Rye  
5.00% Balansa Clover  
35.0% Common Vetch  
20.0% Winter/Hairy Vetch

- Huge Nitrogen fixer
- Improves soil structure and fertility
- Includes the king of nitrogen fixation "Vetch"
- Fast growth that smothers and suppresses weeds

12.00 kg per acre | SKU: 7920

## SAM2 - SOIL IMPROVER COVER CROP



65.00% Winter Forage Rye  
20.00% Yellow Mustard  
5.00% Brown Mustard  
10.00% Mino Diakon Tillage Radish

- Nitrogen lifter and holder (Rye is the most efficient species at catching and holding nitrogen)
- Daikon provides huge roots that break up the soil and reduces compaction
- Produces large quantities of organic matter improves soil biology
- Weed suppressor
- Protects from soil erosion

12.00 kg per acre | SKU: 7921

## SAM2- BLACK GRASS TERMINATOR COVER CROP



70.00% Black / Bristle Oats  
30.00% Yellow Mustard

- Nitrogen holder that is perfect for any area that has a problem with black grass
- The allelopathic compounds released through the roots inhibit weed growth
- Prolific tillering gives good ground coverage that suppresses winter weeds
- Quick to establish and improves soil structure
- Protects from soil erosion

12.00 kg per acre | SKU: 7922

## SAM2 - ECO COVER CROP



75.00% Winter Forage Rye  
25.00% Yellow Mustard

- Nitrogen lifter and holder (Rye is the most efficient species at catching and holding nitrogen)
- High yields of organic matter for soil enhancement
- Good green manuring quality
- Dense canopy formation for maximum weed suppression
- Protects from soil erosion

12.00 kg per acre | SKU: 7923

## SAM2 - RAPID COVER CROP



2.00kg Yellow Mustard  
2.00kg Fodder Radish  
0.50kg Phacelia

- A rapid growing mix that includes the fastest growing cover crop species
- Covering bare ground quickly means its a fantastic weed suppressant
- Excellent nitrogen holder and soil conditioner
- Cost effective seed mixture

4.50 kg per acre | SKU: 7930

## SAM2 - NON BRASICA COVER CROP



3.00 kg Linseed  
2.50 kg Buckwheat  
0.50 kg Phacelia  
1.00 kg Berseem Clover  
2.00 kg Common Vetch  
1.00 kg Crimson Clover

- Ideal diverse cover crop mixture for brassica growers that want to break the cycle of associated pathogens
- Holds nitrogen and improves soils in a brassica rotation

10.00 kg per acre | SKU: 7929

## SAM3 / GS4 - HM.42 HERBAL ECO



- Diverse grass, legume and herb seed mix that creates a multi-functional sward
- Budget friendly option of the herbal diverse or heavy land herbal
- Beneficial to soil health and increases soil organic matter
- High disease and stress tolerance

In the **#GREENBAG**

3.00 kg Merlin Festulolium

2.00 kg Calibra Perennial Ryegrass Int Tet

2.00 kg Boyne Perennial Ryegrass Int Dip

0.40 kg Sparta Cocksfoot

0.40 kg Laura Meadow Fescue

0.45 kg Comer Timothy

0.50 kg Red Clover Blend

0.30 kg White Clover Blend

0.50 kg Aurora Alsike Clover

0.10 kg Choice Chicory

0.10 kg Sheeps Burnet

0.10 kg Sheeps Parsley

0.10 kg Tonic Plantain

0.05 kg Yarrow

10.00 kg per acre | SKU: 7054



## SAM3 / GS4 - LEGUME & HERB RICH SWARDS



2.50 kg Boyne Perennial Ryegrass Int Dip  
 2.60 kg Kendal Perennial Ryegrass Late Dip  
 0.55 kg Sparta Cocksfoot  
 0.80 kg Laura Meadow Fescue  
 0.90 kg Comer Timothy  
 0.50 kg Kora Tall Fescue  
 0.50 kg Altaswede Red Clover  
 0.70 kg Merula Red Clover  
 0.30 kg Leo Birdsfoot Trefoil  
 0.50 kg Aurora Alsike Clover  
 0.60 kg Lucerne Pre Inoculated  
 0.20 kg Choice Chicory  
 0.10 kg Yarrow  
 0.40 kg Sheeps Parsley  
 0.35 kg Tonic Plantain  
 0.50 kg Sheeps Burnet  
 12.00 kg per acre | SKU: 7818

## SAM3 / GS4 - HM.43 HERB AND LEGUME OVERSEEDING



0.65 kg Altaswede Red Clover  
 0.70 kg Merula Red Clover  
 0.60 kg Merwi White Clover  
 0.20 kg Leo Birdsfoot Trefoil  
 0.60 kg Aurora Alsike Clover  
 0.20 kg Choice Chicory  
 0.10 kg Yarrow  
 0.30 kg Sheeps Parsley  
 0.35 kg Tonic Plantain  
 0.30 kg Sheeps Burnet

4.00 kg per acre | SKU: 7819

## SAM3 / GS4 - HM.36 HERBAL DIVERSE (LIGHT LAND)



2.50 kg Lofa Festulolium  
 1.50 kg Sparta Cocksfoot  
 1.00 kg Laura Meadow Fescue  
 1.00 kg Maxima Strong Creeping Red Fescue  
 0.80 kg Comer Timothy  
 1.00 kg Kora Tall Fescue  
 0.50 kg Ezzelina Lucerne (Pre-inoculated)  
 0.75 kg Red Clover Blend  
 0.75 kg White Clover Blend  
 0.45 kg Common Sainfoin  
 0.50 kg Aurora Alsike Clover  
 0.30 kgs Leo Birdsfoot Trefoil  
 0.20 kgs Choice Chicory  
 0.30 kg Sheeps Burnet  
 0.10 kg Sheeps Parsley  
 0.30 kg Tonic Plantain  
 0.05 kg Yarrow  
 12.00 kg per acre | SKU: 7039

# SAM3 / GS4 - HM.28 HEAVY LAND HERBAL



- Diverse grass, legume and herb seed mix that creates a multi-functional sward
- Deep rooted mixture capable of scavenging for micro-nutrients
- Designed to grow on normal to heavy soils. Can perform well in moisture retentive soils
- Strong legume content to maximise nitrogen production
- High yielding mix capable of 10-14t DM/ha
- Can be cut for silage/hay

## In the **#GREENBAG**

2.10 kg Laura Meadow fescue  
 2.65 kg Toddington Perennial Ryegrass Late Dip  
 0.80 kg Comer Timothy  
 1.00 kg Lofa Festulolium  
 1.20 kg Kora Tall Fescue  
 1.00 kg Merula Broad Red Clover  
 0.40 kg Aurora Alsike Clover  
 0.25 kg Yellow Blossom Sweet Clover  
 0.20 kg Leo Birdsfoot Trefoil  
 0.40 kg Alice White Clover  
 0.30 kg Merlyn White Clover  
 1.00 kg Common Vetch  
 0.20 kg Choice Chicory  
 0.20 kg Tonic Plantain  
 0.10 kg Yarrow  
 0.10 kg Sheeps Parsley  
 0.10 kg Sheeps Burnet  
 12.00 kg per acre | SKU: 7051

## IMP2 / AB8 - FLOWER RICH MARGINS



29.0% Slender Creeping Red Fescue  
 28.0% Chewings Fescue  
 26.0% Hard Fescue  
 3.00% Common Bentgrass  
 3.00% Crested Dogstail  
 1.00% Smooth Stalked Meadow Grass  
 3.00% Sainfoin  
 7.00% AP2 Eco Wildflower Mix 100%  
 (AP2 Eco includes 20+ Wildflowers)  
 100%

8.00 kg per acre | SKU: 7804

## IMP3 / OSR SHIELDING MIX



75% Buckwheat  
 25% Berseem Clover  
 100%

5.00 kg per acre | SKU: 7927

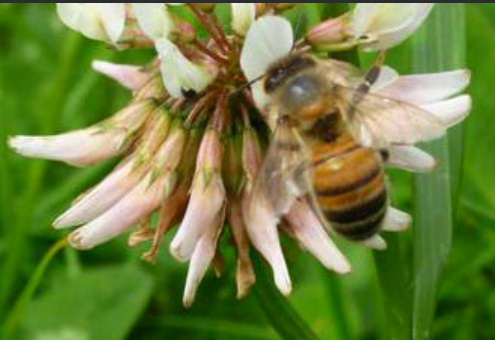
## IMP3 / OSR CAMOUFLAGE MIX



70% Buckwheat  
 20% Berseem Clover  
 10% Fenugreek  
 100%

5.00 kg per acre | SKU: 7928

## NUM2 - LEGUME OVERSEEDER



### OPTION 1 - VIKING WHITE CLOVER MIX

50% Large Leaved White Clover  
50% Medium Leaved White Clover

3.00 kg per acre | SKU: 2452

### OPTION 2 - CANTERBURY WHITE CLOVER MIX

30% Large Leaved White Clover  
35% Medium Leaved White Clover  
35% Small Leaved White Clover

3.00 kg per acre | SKU: 2453

## NUM3 / AB15 - LEGUME FALLOW MIX



10.0% Alsike Clover  
5.00% Birdsfoot Trefoil  
5.00% Black Medick  
50.0% Common Vetch  
15.0% Lucerne (Pre-inoculated)  
15.0% Red Clover Blend

8.00 kg per acre | SKU: 7814

Option available with grass

## AHL1 / AB1 - POLLEN & NECTAR



10.0% Alsike Clover  
10.0% Birdsfoot Trefoil  
5.00% Black Medick  
40.0% Common Vetch  
10.0% Merula Red Clover  
10.0% Altaswede Red Clover (Late Flowering)  
5.00% Lucerne  
5.00% Sweet Clover  
5.00% AP2 Eco 100% Wildflower  
(AP2 Eco includes 20+ Wildflowers)

6.00 kg per acre | SKU: 7810

## AHL2 / AB9 - 1 YEAR WINTER BIRD FOOD



60.0% Spring Triticale  
 10.0% Spring Barley  
 6.0% Linseed  
 5.5% Millet Blend (Red & White)  
 3.0% Fodder Radish  
 2.0% Quinoa Blend  
 3.5% Mustard  
 4.0% Rebound Rape Kale Hybrid  
 1.0% Phacelia  
 5.0% Sunflower Blend

20.00 kg per acre | SKU: 7808

## AHL2 / AB9 - 2 YEAR WINTER BIRD FOOD



60.0% Spring Triticale  
 10.0% Spring Barley  
 5.0% Linseed  
 5.0% Millet Blend (Red & White)  
 3.0% Fodder Radish  
 2.0% Quinoa Blend  
 2.2% Mustard  
 3.0% Stubble Turnip  
 4.2% Kale Blend  
 1.0% Phacelia  
 0.6% Choice Chicory  
 4.0% Sunflower Blend

20.00 kg per acre | SKU: 7807

## AHL3&4 / IGL3 BUFFER STRIPS OPTION A



10%	Timothy
20%	Cocksfoot
35%	Strong Creeping Red Fescue
20%	Meadow Fescue
15%	Agri Tall Fescue
100%	

8.00 kg per acre | SKU: 7803

## AHL3&4 / IGL3 BUFFER STRIPS OPTION B



30%	Strong Creeping Red Fescue
10%	Meadow Fescue
20%	Hard Fescue
10%	Timothy
15%	Tall Fescue
15%	Chewings Fescue
100%	

8.00 kg per acre | SKU: 7801

We have more mixes available, please visit [www.hmseeds.com](http://www.hmseeds.com) or contact us on 01377 271400 / [info@hmseeds.com](mailto:info@hmseeds.com) to discuss your options!

# HURRELLS ARE ONE OF THE LARGEST STOCKISTS OF ORGANIC SEED IN THE UK!

- OUR MIXTURES ARE AVAILABLE ORGANICALLY
- LARGE RANGE OF DIVERSE ORGANIC SEED
- BESPOKE ORGANIC MIXTURES DESIGNED AND MIXED ON SITE BY EXPERTS
- FULLY INDEPENDENT FAMILY BUSINESS
- CALL US OR VISIT OUR WEBSITE

[WWW.HMSEEDS.COM](http://WWW.HMSEEDS.COM)



# HM.13

## DYNAMO



- Dynamic growth and Top yield potential for both Autumn and Spring production
- Very vigorous establishment can also be used for sowing after maize
- Mature crop in 10 weeks
- Easy to establish
- Aimed at a duration period of 18 months
- Excellent potential for grazing and Autumn silage
- Premium Multi cut Westerwolds used including top performing LEMNOS

In the **#GREENBAG**

4.00 kg LEMNOS Multicut Westerwolds Tet  
 4.00 kg PELETON Multicut Westerwolds Tet  
 3.00 kg SYNTILLA Italian Ryegrass Dip  
 3.00 kg SHAKIRA Italian Ryegrass Dip

14.00 kg per acre | SKU: 7013 | 1-2 Years Cutting



FOR AN ORGANIC OPTION PLEASE CONTACT US!





# HM.9

## FORAGE EXPRESS



8 WEEKS SINCE SOWING

- Highly adaptable mixture that will last up to 2 years
- High protein forage
- Very early spring growth with maximum yields at first cut
- High sugar content for maximum fermentation
- High levels of improved red clover varieties for high nitrogen fixation
- Includes vetch for supreme nitrogen fixing and increase of protein (will fix 200kg of n/ha)
- Soil conditioner for successive cropping
- Well suited to low input systems

In the **#GREENBAG**

4.50 kg MERIBEL Italian Ryegrass Dip  
 3.50 kg MELSPRINTER Italian Ryegrass Tet  
 1.00 kg DIPLOMAT Red Clover  
 1.00 kg GLOBAL Red Clover Tet  
 1.00 kg CONTEA Crimson Clover  
 5.00 kg Common Vetch  
 16.00 kg per acre | SKU: 7009 | 1-2 Years Cutting



FOR AN ORGANIC OPTION PLEASE CONTACT US!



# HM.10

## SHORT TERM HI PRO-RED



- A 1-3 year low input Grass Seed and Red Clover mixture
- Very good yields of high quality silage
- Silage produced is high in protein and trace elements
- Red Clover adds the feed value to the silage (20% protein content)
- Fixes large amounts of atmospheric nitrogen, which will benefit this ley & also the following crop
- Late heading perennial ryegrass is prostrate growing and gives good ground cover for late grazing and acts as a weed suppressant

In the **#GREENBAG**



3.00 kg SHAKIRA Italian Ryegrass Dip  
 3.00 kg GEMINI Italian Ryegrass Tet  
 2.00 kg RUSA Hybrid Ryegrass Tet  
 2.00 kg TETRAGRAZE Hybrid Ryegrass Tet  
 1.50 kg ASTON KING Perennial Ryegrass Late Dip  
 1.50 kg DIPLOMAT Red Clover  
 1.00 kg GLOBAL Red Clover Tet

14.00 kg per acre | SKU: 7010 | 1-3 Years Cutting

FOR AN ORGANIC OPTION PLEASE CONTACT US!



# HM.27

## CLAMP BUSTER



- New festulolium mixture
- Much improved persistence over Italian ryegrass/short term leys (especially in year 2)
- Better quality than pure Italian ryegrass only leys
- Festuloliums offer high sugars, high drought tolerance, waterlogged soils tolerant, early spring growth, good winter hardiness, high stress tolerance etc

In the **#GREENBAG**



4.00 kg MERLIN Festulolium (Italian Ryegrass x Meadow Fescue)  
 4.00 kg PERSIUS Festulolium (Italian Ryegrass x Meadow Fescue)  
 3.00 kg MERIBEL Italian Ryegrass Dip  
 3.00 kg MELSPRINTER Italian Ryegrass Tet

14.00 kg per acre | SKU: 7050 | 1-3 Years Cutting

FOR AN ORGANIC OPTION PLEASE CONTACT US!



# HM.14

## HYBRID POWER



- Intensive cutting mix for hay or silage but can also be grazed and is useful for 2 heavy cuts and graze system
- High yielding intensive 3-4 year cutting mixture with aftermath grazing potential
- Hybrids establish much faster than normal perennials and are very easy to establish and grow
- Hybrids combine the yield of an Italian and the quality/sugar content of a quality perennial that has more leafy growth characteristics
- Most hybrids are also tetraploids so they offer excellent silage fermentation
- Very good palatability even in summer production

In the **#GREENBAG**

4.00 kg TETRAGRAZE Hybrid Ryegrass Tet

4.00 kg ASTON CRUSADER Hybrid Ryegrass Tet

4.00 kg AGASKA Perennial Ryegrass Int Dip

2.00 kg LOFA Festulolium

14.00 kg per acre | SKU: 7014 | 3-4 Years Dual Purpose

OPTION AVAILABLE WITH WHITE CLOVER (HM.14C)

FOR AN ORGANIC OPTION PLEASE CONTACT US!



# HM.26

## CONQUEROR



- Premium long term dual purpose mixture. Combining high sugar & high protein grasses for maximum energy values, long term high performance & maximum MILK
- Excellent grazing performance that provides a very dense sward, good D values and high intakes
- High 1st & 2nd cut yields and rapid 2nd cut regrowth, compared to other quality mixtures
- All milk index grasses are tested for digestibility of organic matter, crude protein, water soluble carbohydrates (mainly sugar), cell wall fraction, digestibility of cell wall and ash content
- Explosion is a brand new MI variety. High sugar contents, excellent digestibility, high resistance to rust, consistent high yields & exceptional winter hardiness

In the **#GREENBAG**

3.00 kg ASTON CONQUEROR Perennial Ryegrass Int Dip

2.60 kg EXPLOSION Perennial Ryegrass Int Dip

3.00 kg CHATSWORTH Perennial Ryegrass Int Tet

2.50 kg TIMING Perennial Ryegrass Late Dip

2.90 kg NASHOTA Perennial Ryegrass Late Tet

14.00 kg per acre | SKU: 7032 | 4-5 Years Dual Purpose



OPTION AVAILABLE WITH WHITE CLOVER (HM.26C)

OPTION AVAILABLE WITH RED CLOVER (HM.26R)

# HM.17

## ENDURE



- First class grazing and cutting mix
- Based upon late heading grasses producing a noticeably very dense, hardwearing sward
- Excellent 'D' values and palatability for optimum intake and performance
- Consistent production of high D value combined with High levels of sugar, minerals & protein.
- Surplus growth makes excellent silage and suitable for all livestock
- Top persistence and hardiness for many years reliable output
- Retains optimum quality/D value when left to bulk up as contains late maturing grasses that are exceptionally resistant to produce seed heads this maximises quality over long periods of the year.

In the **#GREENBAG**

3.00 kg ASTON KING Perennial Ryegrass Late Dip

3.00 kg SWAN Perennial Ryegrass Late Dip

2.50 kg MELFROST Perennial Ryegrass Late Tet

3.00 kg MELPAULA Perennial Ryegrass Late Tet

1.50 kg COMER Timothy

1.00 kg CANTERBURY White Clover Blend

14.00 kg per acre | SKU: 7017 | 4-8 Years Dual Purpose

FOR AN ORGANIC OPTION PLEASE CONTACT US!



# HM.19

## OVERSEEDER



- Ideal for over-seeding damaged/worn-out pastures
- Our trials suggest, tetraploid grasses give better results when over seeding. Due to the seed being larger than diploids, establishing faster and is stronger and more dynamic in the early phases of establishment against existing grasses.
- Can be direct drilled into existing grassland
- Can be broadcasted (grass should be cut low or grazed for best results)

In the **#GREENBAG**

2.00 kg GEMINI Italian Ryegrass Tet

3.00 kg ASTON CRUSADER Hybrid Ryegrass Tet

3.00 kg NOLWEN Perennial Ryegrass Int Tet

2.00 kg ALFONSO Perennial Ryegrass Late Tet

10.00 kg per acre | SKU: 7019 | 3-4 Years Overseeding



FOR AN ORGANIC OPTION PLEASE CONTACT US!



# HM.35

## SWARDSTER



- Professional long-term, tight heading dairy mixture (dual purpose)
- Late heading mixture, with very close heading dates (2nd-4th of June) for flexible management
- High sugar and high protein for maximum energy values
- Long term performance & maximum MILK!
- Includes MILK INDEX varieties. High sugar content, high protein, high feed quality and higher yields of forage
- Also available with the SWALEDALE White Clover Mix

In the **#GREENBAG**

3.50 kg NASHOTA Perennial Ryegrass Late Tet  
 3.00 kg MEIDUNO Perennial Ryegrass Late Tet  
 4.00 kg ASTON KING Perennial Ryegrass Late Dip  
 3.50 kg OAKPARK Perennial Ryegrass Late Dip

14.00 kg per acre | SKU: 7034 | 5 Years Grazing



OPTION AVAILABLE WITH WHITE CLOVER



# HM.37

## PLATINUM



- Designed to produce superior cutting quality
- High quality ley for intensive cutting with very close heading dates (21st-24th of May)
- Close heading dates allow for better management of the grass ley
- Upright growth habit, ideal for cutting
- Very high yielding and fast re-growth
- Can also be left for hay or haylage

In the **#GREENBAG**



2.50 kg PERSIUS Festulolium (Italian Ryegrass x Meadow Fescue)  
 3.00 kg KIRIAL Hybrid Ryegrass Tet  
 3.00 kg BOYNE Perennial Ryegrass Int Dip  
 3.00 kg ASTON CONQUEROR Perennial Ryegrass Int Dip  
 2.50 kg NOLWEN Perennial Ryegrass Int Tet

14.00 kg per acre | SKU: 7045 | 5 Years Cutting

# HM.40

## FESTULOLIUM +



- New festulolium mixture
- Very high cutting yields
- Ideally suited to dry and free draining soils
- Very tolerant to drought prone soils
- Excellent persistence
- Early spring growth
- Festuloliums offer good sugars, high drought tolerance, waterlogged tolerance, early spring growth, good winter hardiness, high stress tolerance etc

In the **#GREENBAG**

4.00 kg FOJTANFestulolium (Tall Fescue x Ryegrass)

4.00 kg LOFA Festulolium (Tall Fescue x Ryegrass)

3.00 kg EXPLOSION Perennial Ryegrass Int Tet

3.00 kg ASTON VISION Perennial Ryegrass Int Tet

14.00 kg per acre | SKU: 7058 | 5+ Years Cutting



FOR AN ORGANIC OPTION PLEASE CONTACT US!



# NZ

## NZ COOL GRAZE



- Grows down to soil temperatures of 3 degrees
- This provides longer grazing periods which saves on feed costs (early Spring & late Autumn)
- Fast establishment, superior ground cover and high sward density
- Very palatable
- Good rust resistance
- Excellent animal performance
- Great early Spring and Autumn production
- Exceptional summer yields
- Designed especially for New Zealand grazing systems

In the **#GREENBAG**

3.50 kg KIRIAL Hybrid Ryegrass Tet

4.50 kg RITCHIE Perennial Ryegrass Int Tet

4.00 kg MOIRA Perennial Ryegrass Int Dip

2.00 kg ASTON KING Perennial Ryegrass Late Dip

14.00 kg per acre | SKU: 7023 | 4 Years Grazing

OPTION AVAILABLE WITH WHITE CLOVER

FOR AN ORGANIC OPTION PLEASE CONTACT US!





## PREMIUM GAMECOVER SEED SUPPLIER

- ALL SEASONS GAME MAIZE
- COVER/FEED MIXTURES
- LONG TERM COVER
- SPRAYABLE COVER
- INDIVIDUAL GAME STRAIGHTS
- STEWARDSHIP MIXTURES
- MISCANTHUS SUPPLY
- ARTICHOKE SUPPLY



## WE ARE WILDFLOWER GROWERS AND SUPPLIERS

- MIXTURES FOR ENVIROMENTAL SCHEMES
- WILDFLOWER MIXTURES WITH AND WITHOUT GRASSES
- WILDFLOWER STRAIGHTS (INCLUDING YELLOW RATTLE)
- MINSTER MEADOWS RANGE (UK NATIVE)
- URBAN HIGH COLOUR RANGE (UK NATIVE & HORTICULTURAL FLOWERS)
- ENVIROMENTALLY FRIENDLY

## FRISIA STUBBLE TURNIP



- Frisia produces giant tankard shaped roots with high dry matter
- The large cylindrical roots offer high intakes and excellent liveweight gains in replicated TRIALS and is suitable for all livestock
- The Large roots grow mainly out of the ground for maximum utilisation and of easy management, Furthermore, Frisia provides an invaluable winter forage and excellent over winter feed
- It has good keeping and grazing qualities
- Exceptional Winter-hardiness
- Excellent mildew and club root tolerance
- Fresh yields of 70 tons per ha and constantly outyields other varieties

2.00 kg per acre | SKU: 4302

## WHITESTAR STUBBLE TURNIP



- Grows a nice rounded globe white bulb
- Most of its white flesh is above ground (but well anchored)
- Erect strap leaves
- Clean lifting variety with a low dirt tare
- Excellent all round disease resistance
- High annual yields and excellent keeping ability later on in the year
- Highly palatable with minimum wastage
- Optimum sowing times are between June and end of August
- A frost survivor that will supply excellent grazing into Feb

2.00 kg per acre | SKU: 4307

Other stubble turnip varieties that we stock include -

BARKANT (Red fleshed bulbs, that are mainly above the ground)

TYFON (Leafy variety that's a Chinese cabbage and stubble turnip cross)

SAMSON (Tankard purple and white bulb that can be grazed or lifted)

## REBOUND

### RAPE/KALE HYBRID



- Rebound is a very vigorous, late flowering Rape Kale Hybrid Brassica
- Has excellent dry matter production and has the ability to regrow after grazing or mowing
- Hybrids are bred to produce a variety with more flexibility in it's usage than either Forage Rape or Kale
- Super fast growing like Forage Rape with a good winter hardiness of Kale (high yields of very nutritious leafy forage)
- Use as a summer crop for fattening & finishing or as an Autumn sown crop for winter feed
- Does not need to reach optimum maturity before grazing unlike forage rapes
- Can be grazed after 10-14 weeks

3.00 kg per acre | SKU: 4700



## FODDER BEET VARIETIES

- BRIGADIER (14.5% DM)
- FELDHERR (15.2% DM)
- BANGOR (17.5% DM)
- MERVEILLE (17.9% DM)
- JAMON (18% DM)
- CAGNOTTE (18.4% DM)
- KYROS (18.5% DM)
- BLAZE (18.8% DM)
- ROBBOS (19.9% DM)
- TARINE (20.8% DM)
- MAGNUM (20.8% DM)
- ENERMAX (21.3% DM)
- TADORNE (22.7% DM)
- BRICK (23.6% DM)

"Brigadier Fodder Beet is the best insurance program any livestock farmer could put in the ground. I have grown Brigadier in the same field for the last 4 years and never had to spray for disease" - Ian Burdass, Burdass Lamb Ltd

## LATE SOW LATE FEED



0.75 kg REBOUND Rape Kale Hybrid  
 0.75 kg FRISIA Stubble Turnip  
 0.75 kg RINGO Forage Rape

- Catch crop mixture
- Ideal for later use
- It can be sown between July & August
- Graze-able in just 8 weeks after sowing
- Can be fed from November through to February
- The re-growth from the Ringo and Rebound can offer additional grazing

2.25 kg per acre | SKU: 7702

### OTHER SEEDS WE STOCK -

- EARLY SOW LATE FEED
- SWEDE
- KALE
- FORAGE RAPE
- MUSTARD
- VETCH & OTHER LEGUMES
- FODDER RADISH
- TILLAGE RADISH
- BIO FUMIGANT RADISH
- FORAGE RYE
- FORAGE MAIZE
- AMENITY SEED
- AND MUCH MORE!

JUST CALL US OR VISIT OUR WEBSITE!

[WWW.HMSEEDS.CO.UK](http://WWW.HMSEEDS.CO.UK)

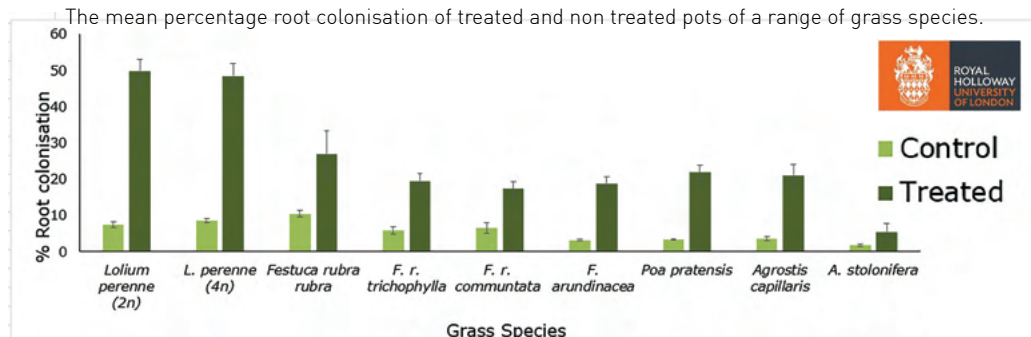




# MYCORRHIZAE

## What is Mycorrhizae?

A naturally occurring beneficial fungus that forms a symbiotic relationship with the plants. It attaches to the roots and becomes extensions of the root system. This dramatically expands access to moisture and nutrients from the soil. In return, the host plant feeds the fungi with sugars and organic substances. For further information call 01377 271400 or speak to your local representative/distributor



## How does this benefit me?

- Improves establishment
- Increases the % of sown grasses in the sward over weeds
- Greatly improves root mass
- Increases nutrient uptake
- Less prone to disease and recovers faster after disease
- Increases plant tolerance to drought and stressful conditions



@thetreebarn "The winter bird food seed mix is looking lovely! In this plot we have a 1 year mix (from Hurrells Seeds)"



@ben\_lumley "Fresh stock bull Hasbulla arrived this week, straight to work with the girls"



@planting\_by\_design "Our over wintering bird food mix is doing really well despite the lack of rain this year"

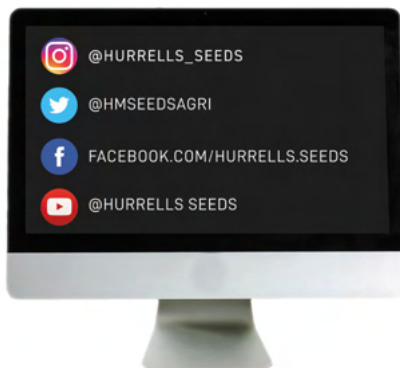


@Farmer Barney "The @HmSeedsAgri #organic mustard is a great environment for training the #cockerspaniel here on the @LincsWoldsAONB"



@WhitriggsStuart - "@HmSeedsAgri need to complain... your herbal mix grows too much ;)"

TAG US ON SOCIAL MEDIA!



## BANK DETAILS

HURRELL & MCLEAN SEEDS LTD  
ACCOUNT NUMBER - 4014 2077  
SORT CODE - 20-43-47  
BANK - BARCLAYS

## OTHER DETAILS

EMAIL: [INFO@HMSEEDS.COM](mailto:INFO@HMSEEDS.COM)  
PHONE: 01377 271400  
WEB: [WWW.HMSEEDS.COM](http://WWW.HMSEEDS.COM)

COMPANY REG NO: 03352454  
VAT NO: 847272702  
MERCHANT: 01062  
REGULATED BY DEFRA

## ADDRESS

HURRELL & MCLEAN SEEDS LTD  
BEVERLEY ROAD  
CRANSWICK, DRIFFIELD  
EAST YORKSHIRE  
YO25 9PF



# Hurrells

Specialist Seeds

HURRELLS SEEDS,  
BEVERLEY ROAD,  
CRANSWICK  
EAST YORKSHIRE,  
YO25 9PF

01377 271400  
INFO@HMSEEDS.COM  
WWW.HMSEEDS.COM

